

Supplementary information for

Title: Geoelectric structure of Northern Cambay rift basin from magnetotelluric data

Authors: Nagarjuna Danda¹, C. K. Rao¹ and Amit Kumar²

1. Dr. K. S. Krishnan Geomagnetic Research Laboratory, IIG, Allahabad, India

2. Indian Institute of Geomagnetism, New Panvel, Navi Mumbai, India

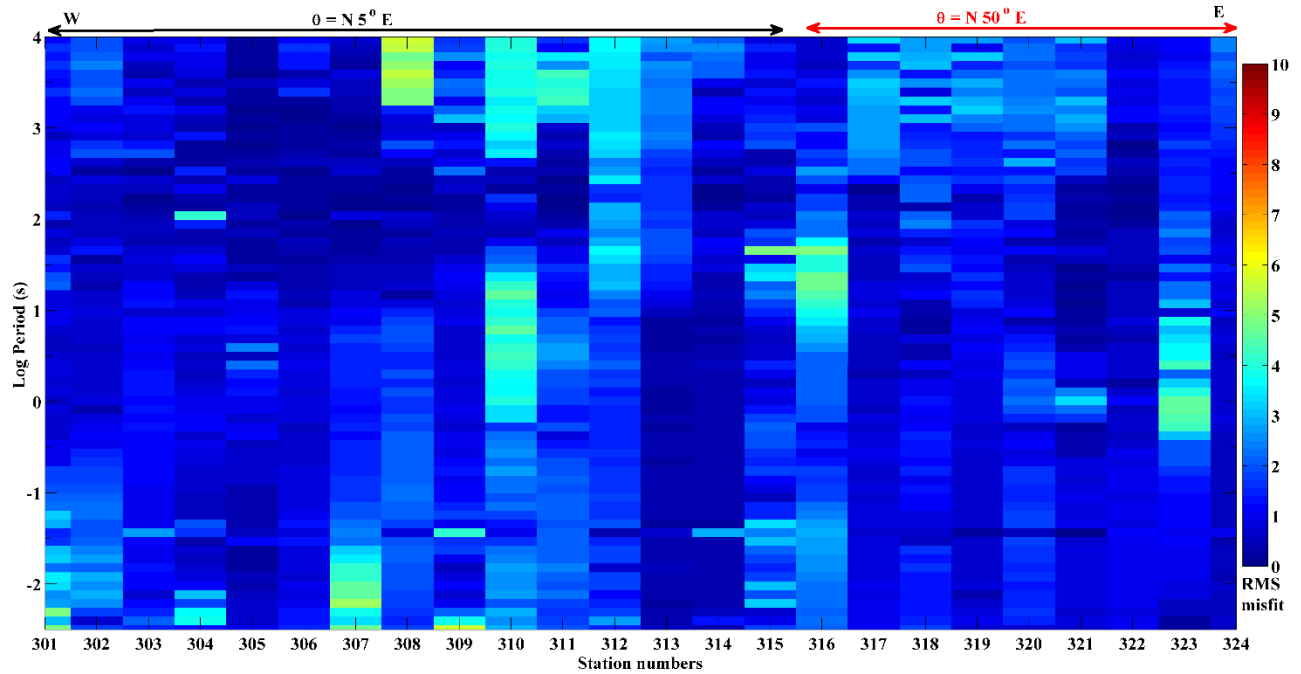


Figure S1(a): Pseudosection of RMS misfits illustrating the results from tensor decomposition model to the measured impedance data along the profile for both strike angles 5° (301-315) and 50° (316-324) as marked at the top.

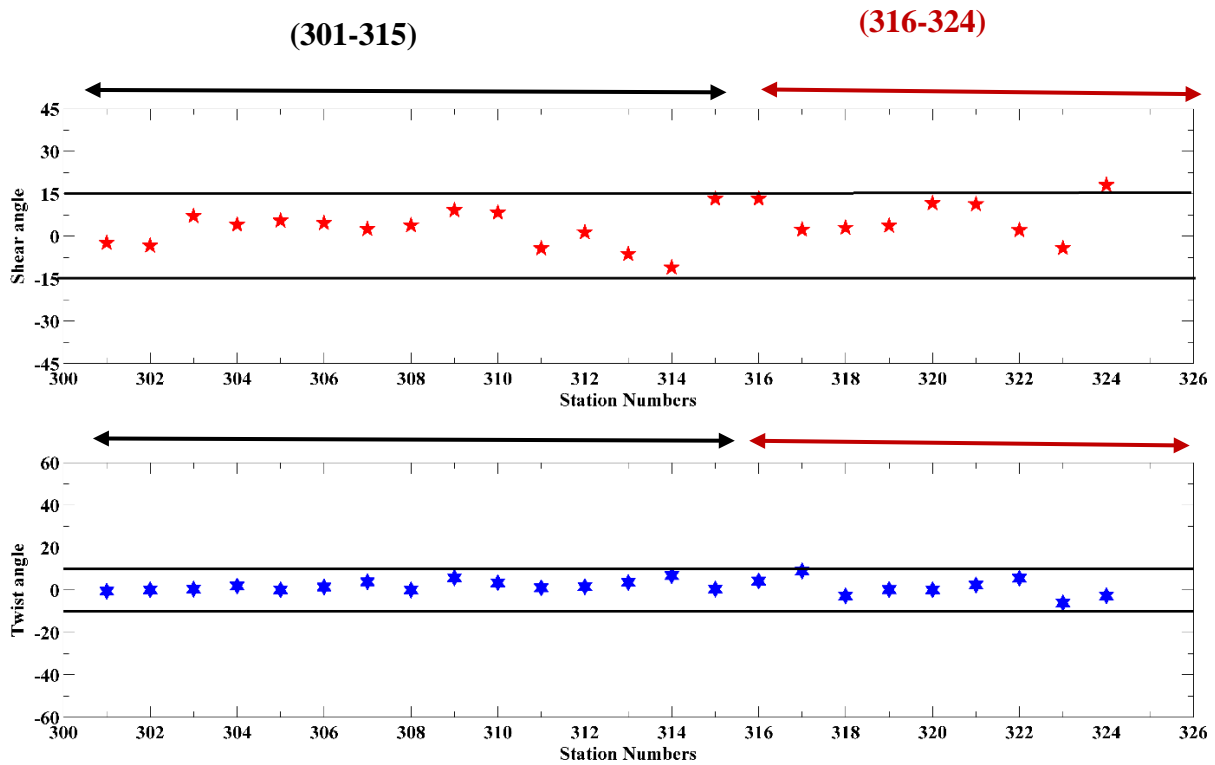


Figure S1(b): Shear and Twist angles obtained from the tensor decomposition model of MT data.

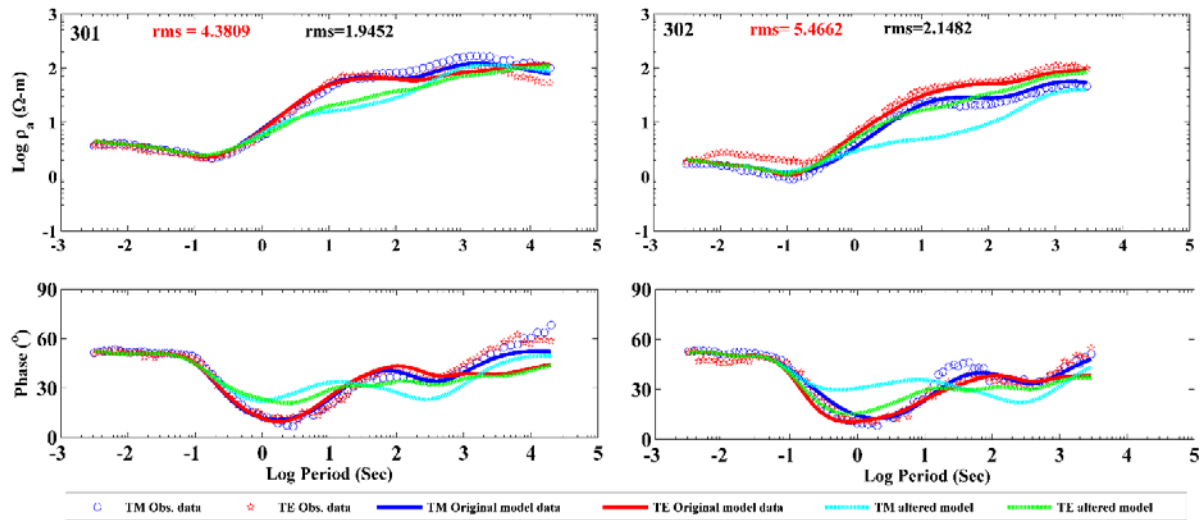


Figure S2(a): Results of the non-linear forward and inversion sensitivity test carried out for the resistive feature R6. Site names are shown on the top left in resistivity curves panel, and the RMS misfit at sites for the original model (red) and altered model (black) are given at the top of each plot in resistivity curves panel.

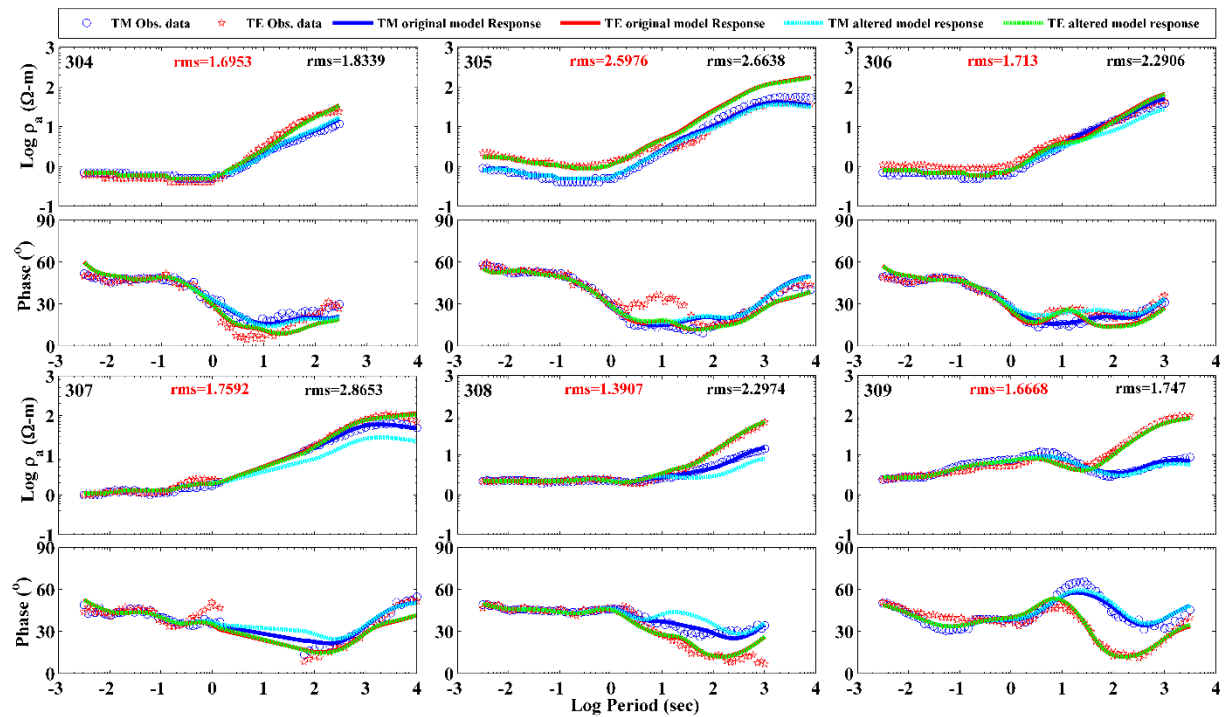


Figure S2(b): Results of the non-linear forward and inversion sensitivity test carried out for the resistive feature R2. Site names are shown on the top left in resistivity curves panel, and the RMS misfit at sites for the original model (red) and altered model (black) are given at the top of each plot in resistivity curves panel.

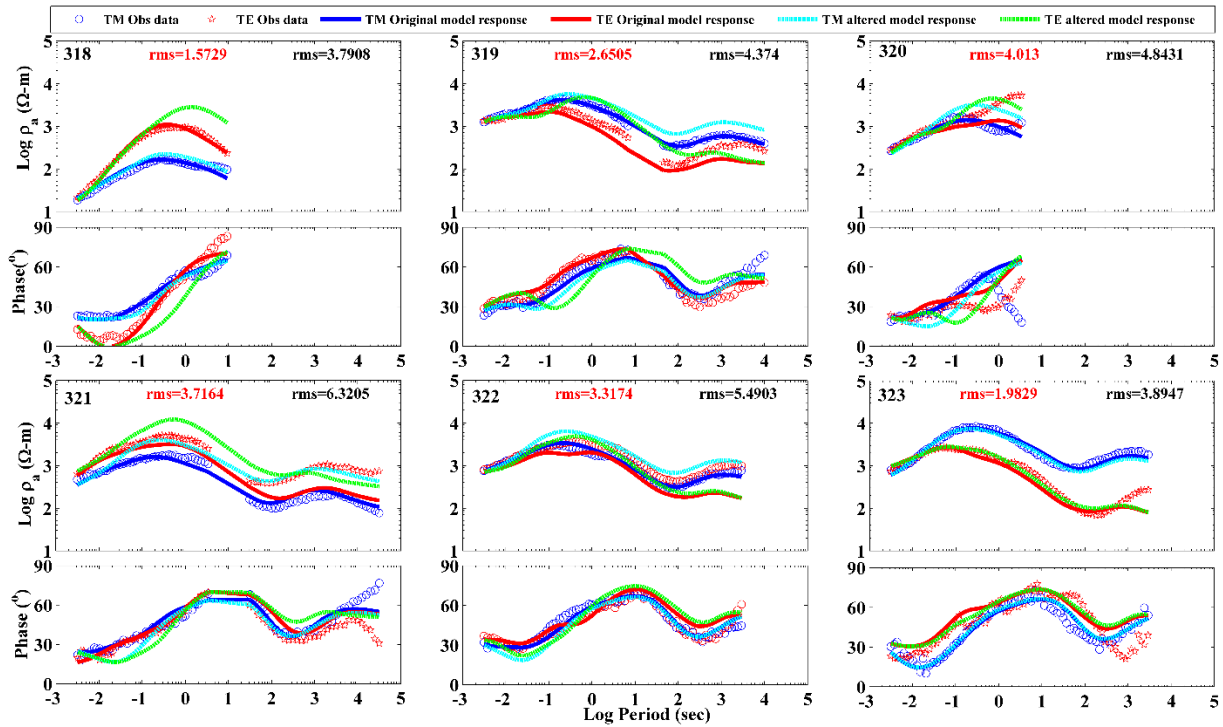


Figure S2(c): Results of the non-linear forward and inversion sensitivity test carried out for the conductive features C3 and C4. Site names are shown on the top left in resistivity curves panel, and the RMS misfit at sites for the original model (red) and altered model (black) are given at the top of each plot in resistivity curves panel.