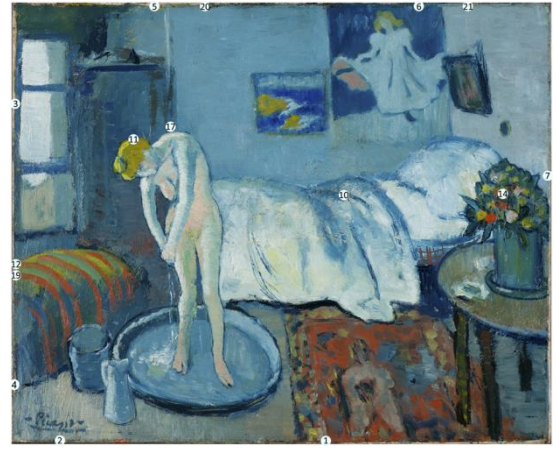


Table A: Summary of findings of cross-sectional analysis

Analytical methods used:

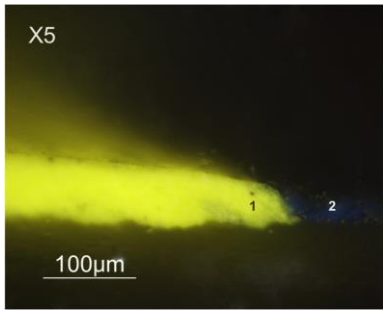
a - SEM-EDX; *b* - μ Raman; *c* - μ FTIR; * - Not analyzed;

Where no method is indicated, layer attribution is based on the overall data summary, including pXRF data and comparison to other layers



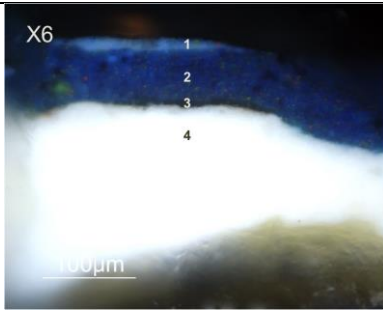
The Blue Room with locations of cross-section samples.

	<p>Red over black, from bottom edge, right of center (carpet)</p> <ol style="list-style-type: none"> 1. <i>Varnish</i> 2. <i>Beige</i> - zinc white^b with barium sulfate^c (larger, translucent white particles), Prussian blue^b vermillion^b, chrome yellow^b 3. <i>Thin blue/green</i> – Prussian blue 4. <i>Orange</i> – Vermilion^a mixed with chrome yellow^b and zinc white with barium sulfate 5. <i>Light blue</i> – zinc white with barium sulfate, Prussian blue and vermillion 6. <i>Black</i> - carbon black^c, barium sulfate^c
	<p>Blue over red, from bottom edge at left, beneath signature (layers possibly altered during process of lining and/or re-stretching, c.1954)</p> <ul style="list-style-type: none"> - <i>Yellow</i> - chrome yellow^{a,b} - <i>“Green”</i> (upper left) - chrome yellow^{a,b}, Prussian blue^b, carbon black^b - <i>Blue</i> - Prussian blue^{a,b}, vermillion^{a,b} - <i>Red</i> – vermillion^{a,b} - Lead is detected in all layers, possibly as a drier^a
	<p>Blue over yellow, from left edge near top (window frame)</p> <ol style="list-style-type: none"> 1. <i>Blue with red particles</i> – Prussian blue^b, vermillion^b, carbon black^b 2. <i>Compound green</i> – carbon black (larger particles), chrome yellow^{b,c}, with some Prussian blue^b and vermillion^b 3. <i>Yellow</i> - chrome yellow^{b,c} mixed/extended with zinc white^b and barium sulfate^{b,c}
	<p>Dark blue on white ground, taken from left edge near bottom</p> <ol style="list-style-type: none"> 1. <i>Varnish</i> 2. <i>White or light blue surface layer</i> 3. <i>Dark blue and white mixed wet-into-wet with small yellow and red particles throughout</i> – Prussian blue^{a,b}, chrome yellow^b, ivory or bone black^a, vermillion 4. <i>Ground</i> – lead white^a



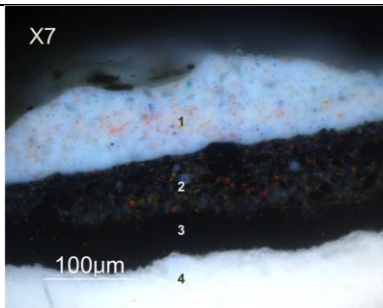
Blue over yellow, from top edge, near left

1. *Yellow* – chrome yellow^b
2. *Blue* – Prussian blue^b



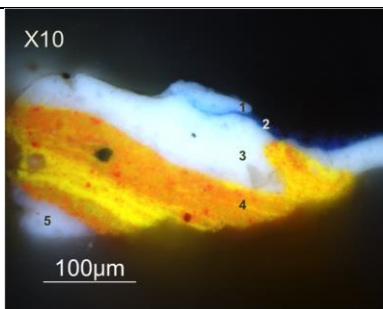
Light blue over medium blue, from top edge, right of center (poster)

1. *Light blue* – zinc white^{a,b} with barium sulfate^{a,c}, Prussian blue^b
2. *Medium blue* – approx. 1:1 mix of Prussian blue with zinc white/barium sulfate
3. *Black* – ivory or bone black^a
4. *White ground* – lead white^b with gypsum^b



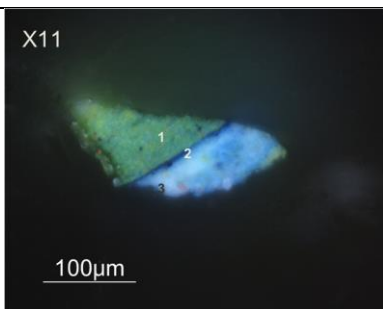
Light blue over dark blue, from right edge, near flowers

1. *Light blue* – zinc white^b with barium sulfate^c, scattered particles of Prussian blue^b, vermilion^b, and chrome yellow^b
2. *Dark blue* – Prussian blue^b and carbon black^b with scattered particles of vermilion^b
3. *Black*
4. *White ground* – lead white^b with gypsum^b



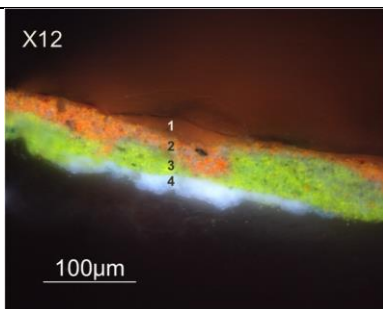
White/light blue over red, from center of bedcovers

1. *Light blue* – zinc white^b, barium sulfate^c, Prussian blue^b
2. *Medium blue* – Prussian blue^b
3. *White* – zinc white, barium sulfate^b, Prussian blue^b, vermilion^b
4. *Red and yellow* (mixed wet-into-wet) – vermilion^b, chrome yellow^{b,c}, barium sulfate^b
5. *White ground*



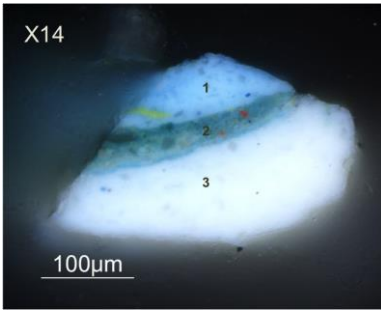
Yellow, from hair of bathing figure

1. *Light green* – cadmium yellow^b, chrome yellow^b, Prussian blue^b, zinc white^b, barium sulfate^b
2. *Blue* – Prussian blue^b
3. *Light blue* – Prussian blue^b, chrome yellow^b, cadmium yellow(?), zinc white(?), barium sulfate



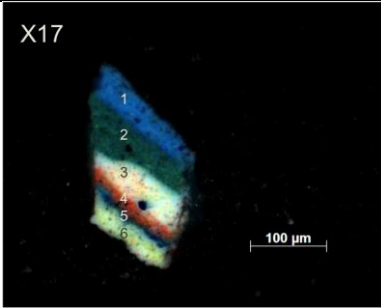
Yellow over red, from left edge, below center (sofa)

1. *Varnish*
2. *Red* – vermilion^{a,b}, zinc white^{a,b} with barium sulfate^{a,c}, traces of Prussian blue^b
3. *Yellow* – cadmium yellow^{a,b}, chrome yellow^{a,b}, Prussian blue^b, zinc white with barium sulfate^{a,b}
4. *White* – zinc white^{a,b} with barium sulfate^{a,b}



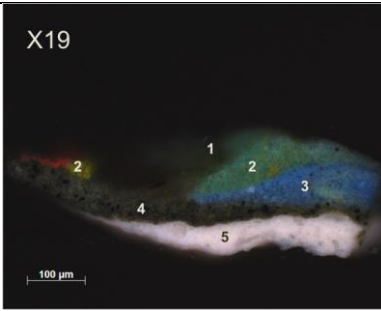
Green over light blue, from bouquet of flowers

1. *Light blue* – Prussian blue^b zinc white^b with barium sulfate^{b,c}
2. *Blue-green* (lighter streaks indicate wet-into-wet mixing in this layer) – Prussian blue^b, zinc white with barium sulfate^b, vermilion^b, emerald green^a, cadmium yellow^b
3. *White* (from the shirt in the underlying painting) – zinc white^b with barium sulfate^b



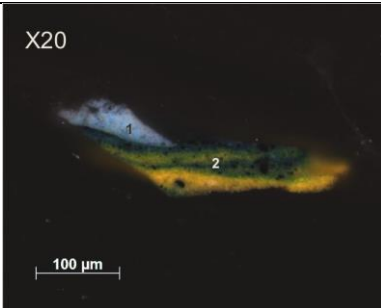
Blue over pale yellow, from above shoulder of bathing figure (near sitter's left eye in the portrait)

1. *Light blue* – Prussian blue^a and zinc white^a with barium sulfate^a
2. *Green* – chrome yellow^a, Prussian blue^a, copper green^a (possibly emerald green), barium sulfate
3. *White* – zinc white with barium sulfate
4. *Red* – vermilion^a
5. *Blue* – Prussian blue
6. *White* – zinc white with barium sulfate



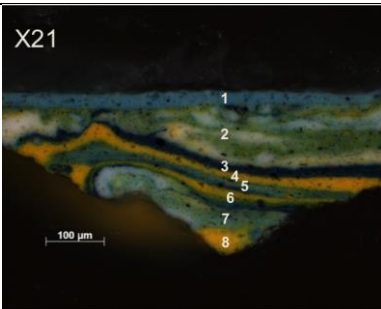
Light green over dark green from left edge, below center (sofa)

1. *Varnish*
2. *Red/Yellow/Green*
3. *Light blue*
4. *Compound green* – ivory black^a, chrome yellow^a, zinc white^a with barium sulfate^a
5. *White*



*Light blue over yellow and dark blue, from top edge, left of center (sitter's left shoulder in portrait)

1. *Light blue*
2. *Dark blue and yellow mixed*
3. *Yellow*



Top right edge; medium blue over mixed color

1. *Medium blue* – zinc white^a with barium sulfate^a, Prussian blue^a
2. *Green and white mixed* – zinc white^a with barium sulfate^a, small amounts Prussian blue, chrome yellow^a
3. *Dark blue* – Prussian blue
4. *Yellow* – chrome yellow
5. *Light blue* – Prussian blue, chrome yellow, zinc white with barium sulfate
6. *Blue and yellow mixed* – Prussian blue, chrome yellow