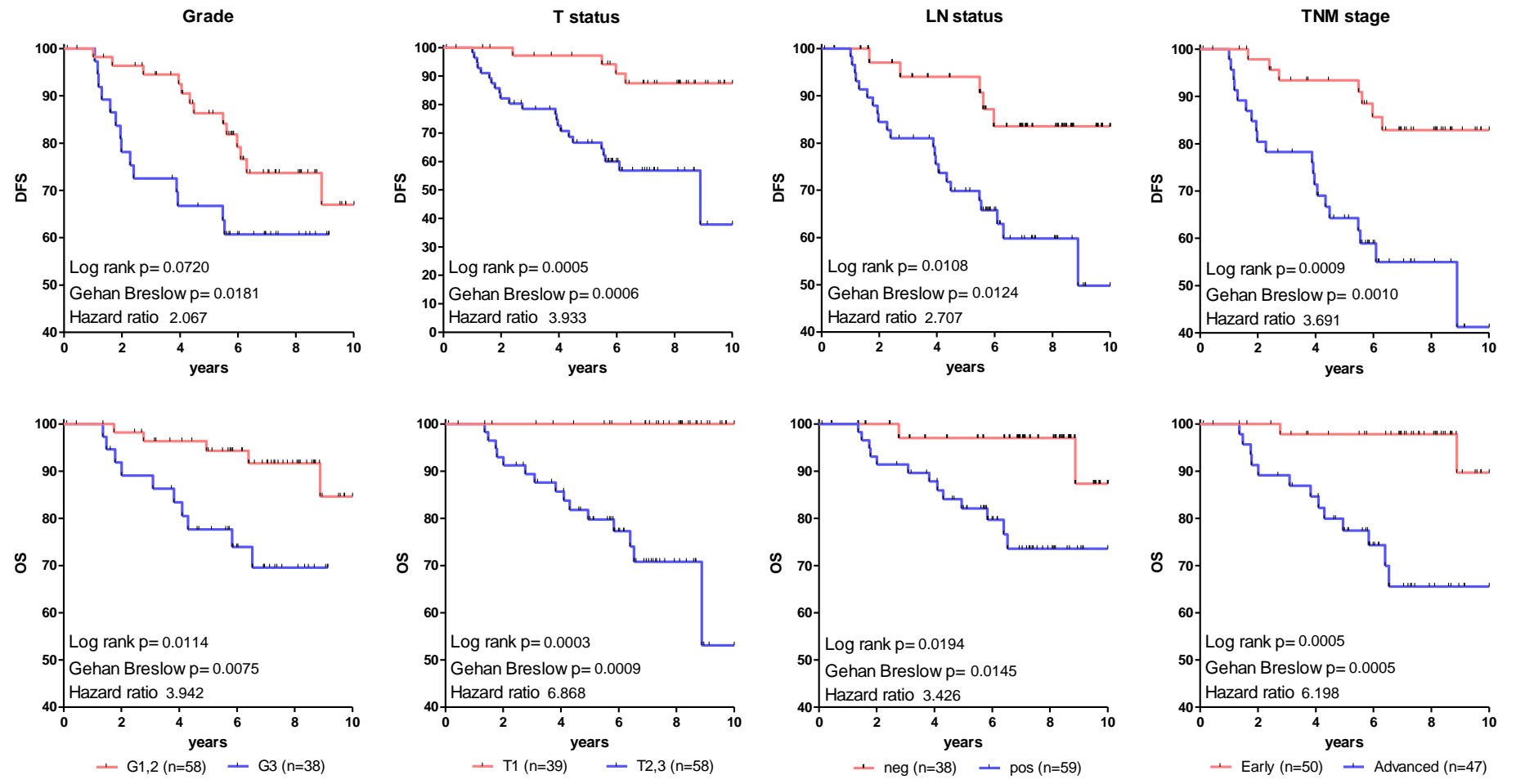
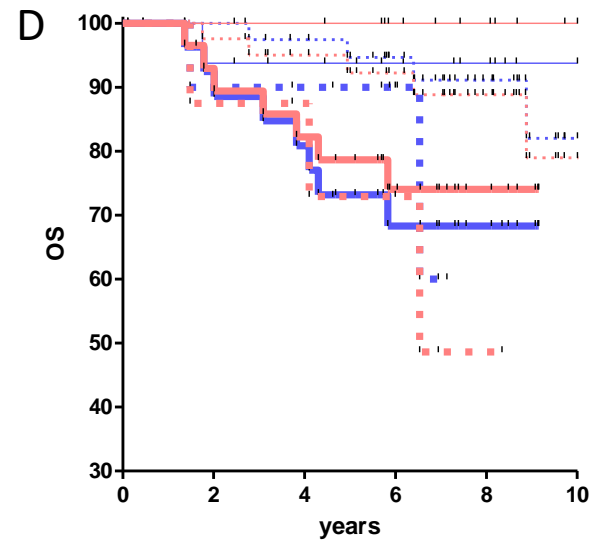
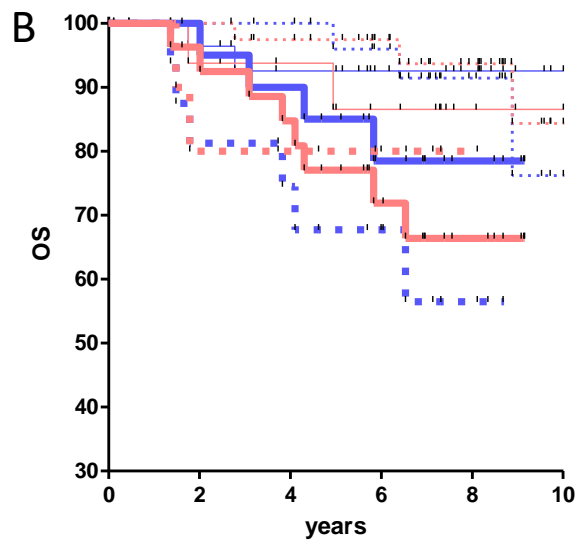
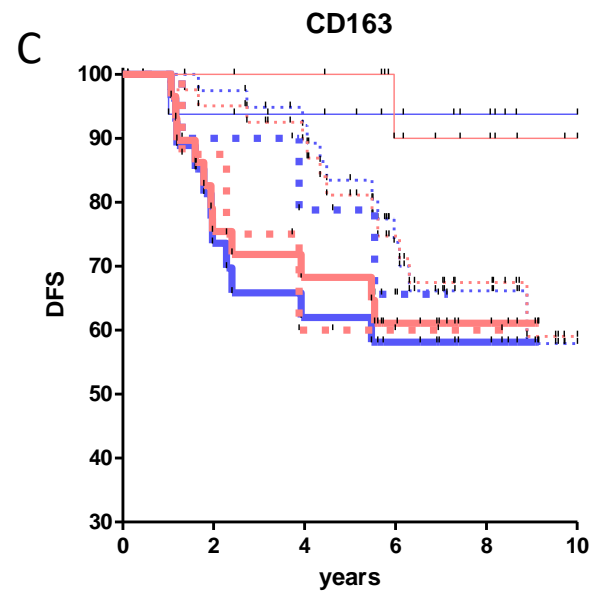
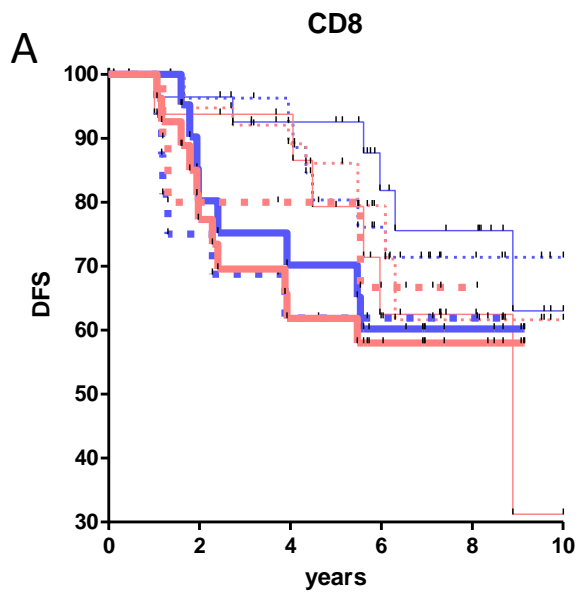


All patients



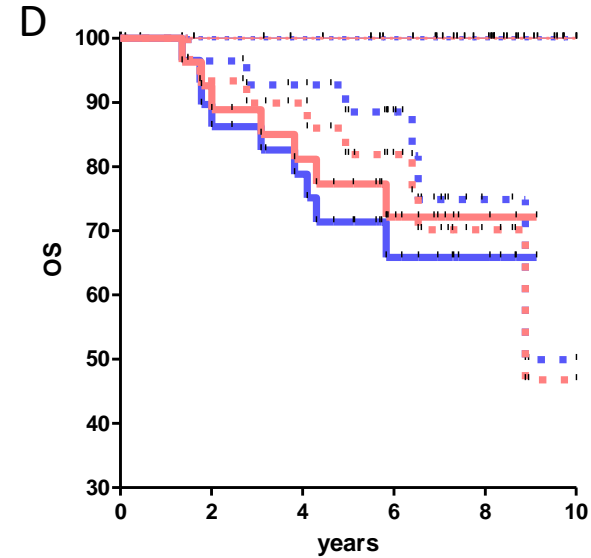
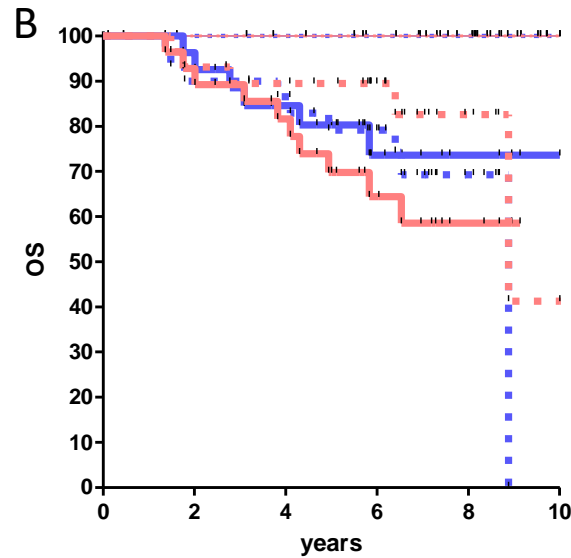
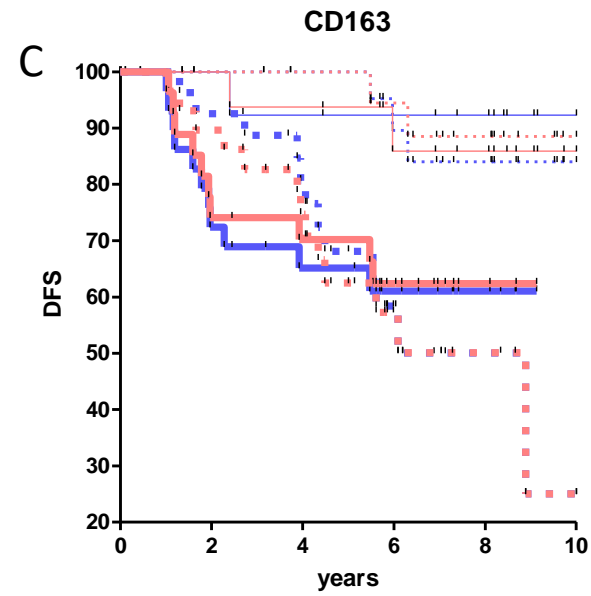
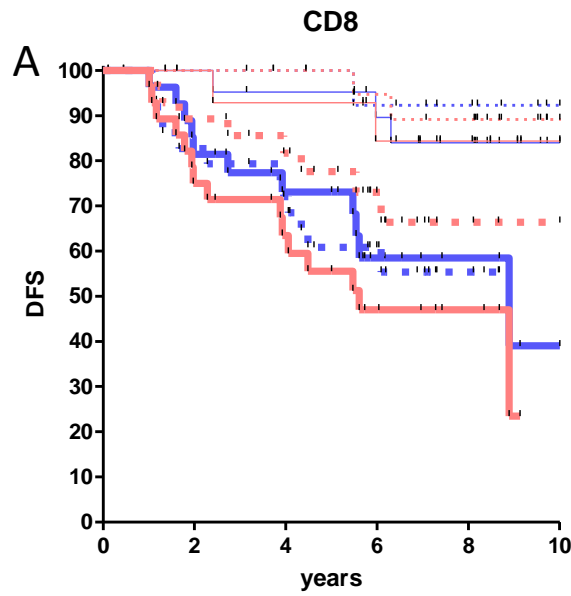
Grade



— G1,2 TC H (n=28) ··· G1,2 TC L (n=30)
 — G1,2 IM H (n=17) ··· G1,2 IM L (n=41)
 — G3 TC H (n=22) ··· G3 TC L (n=16)
 — G3 IM H (n=28) ··· G3 IM L (n=10)

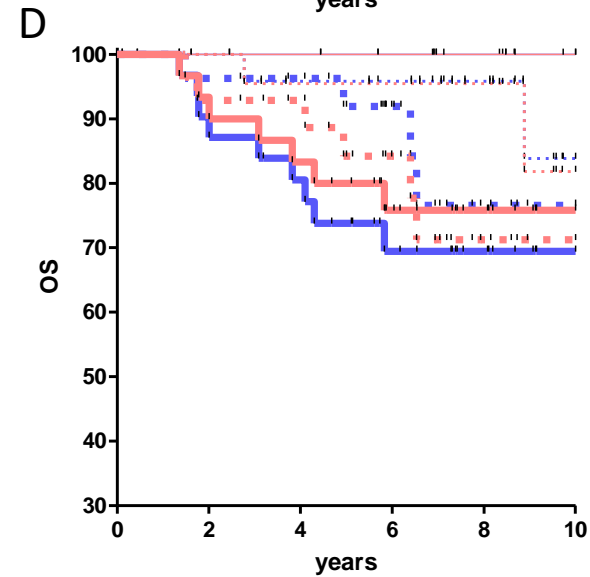
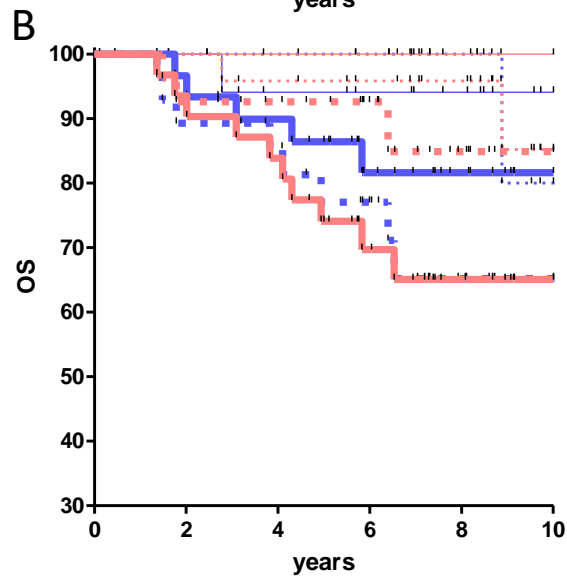
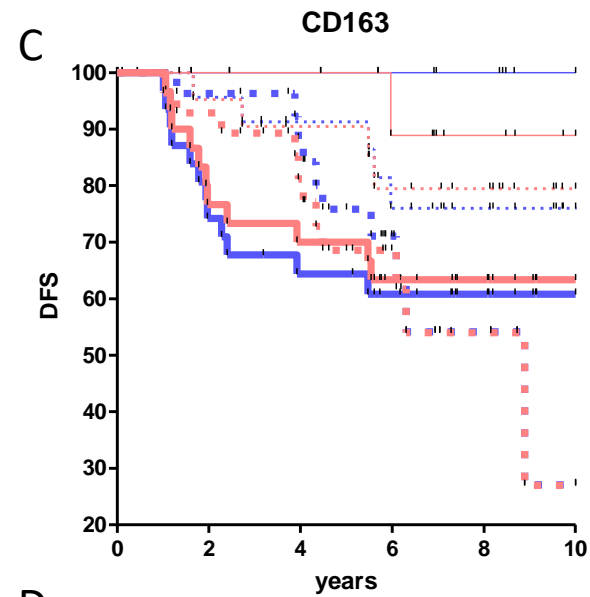
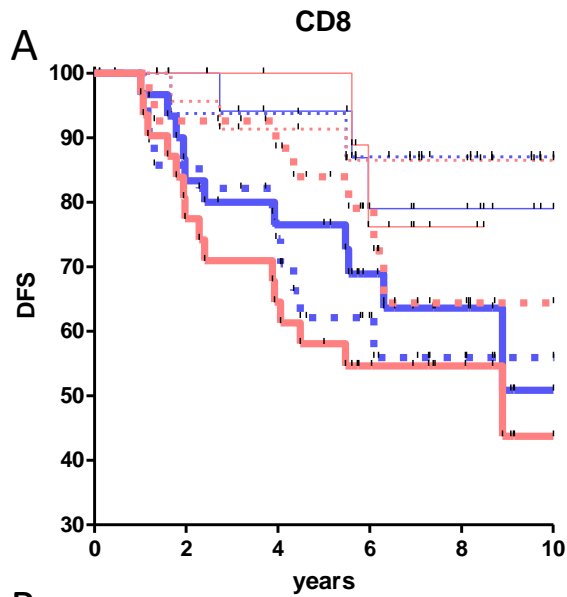
— G1,2 TC H (n=17) ··· G1,2 TC L (n=41)
 — G1,2 IM H (n=15) ··· G1,2 IM L (n=43)
 — G3 TC H (n=28) ··· G3 TC L (n=10)
 — G3 IM H (n=30) ··· G3 IM L (n=8)

T status



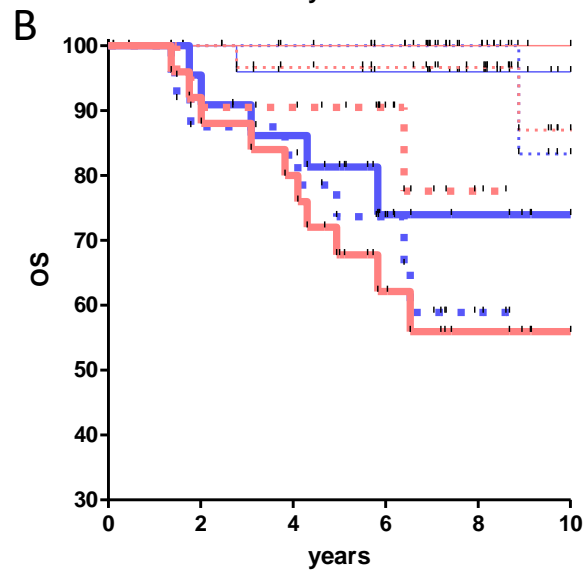
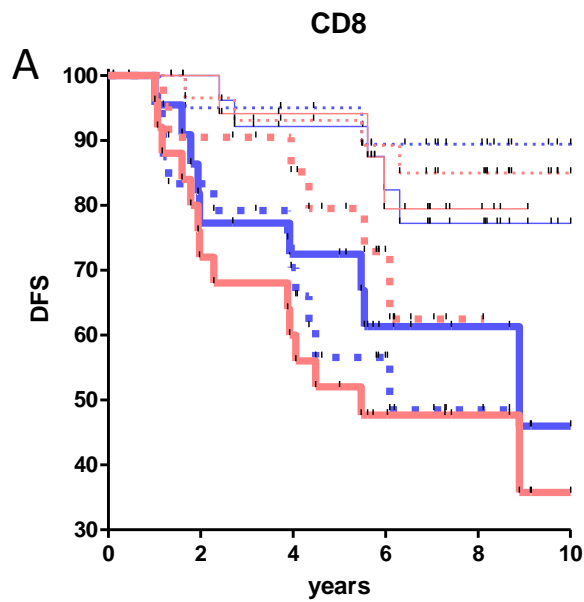
- T1 TC H (n=22) ··· T1 TC L (n=17)
- T1 IM H (n=16) ··· T1 IM L (n=23)
- T2,3 TC H (n=28) ··· T2,3 TC L (n=30)
- T2,3 IM H (n=29) ··· T2,3 IM L (n=29)

- T1 TC H (n=15) ··· T1 TC L (n=24)
- T1 IM H (n=17) ··· T1 IM L (n=22)
- T2,3 TC H (n=30) ··· T2,3 TC L (n=28)
- T2,3 IM H (n=28) ··· T2,3 IM L (n=30)

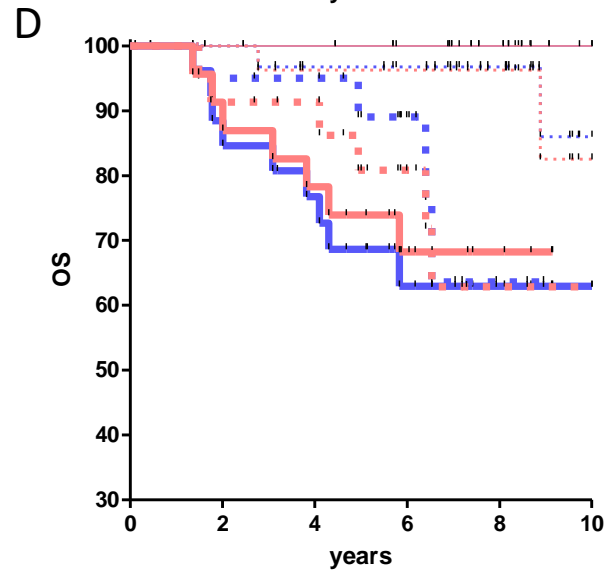
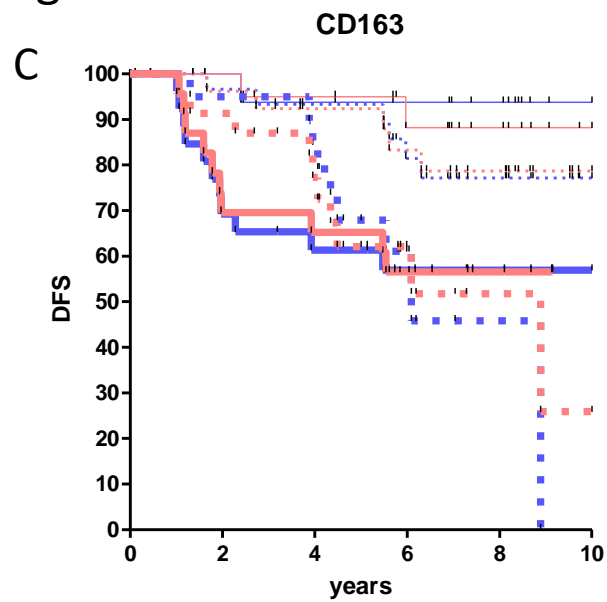


— LN neg TC H (n=19) - - - LN neg TC L (n=19)
 — LN neg IM H (n=13) - - - LN neg IM L (n=25)
 — LN pos TC H (n=31) - - - LN pos TC L (n=28)
 — LN pos IM H (n=32) - - - LN pos IM L (n=27)

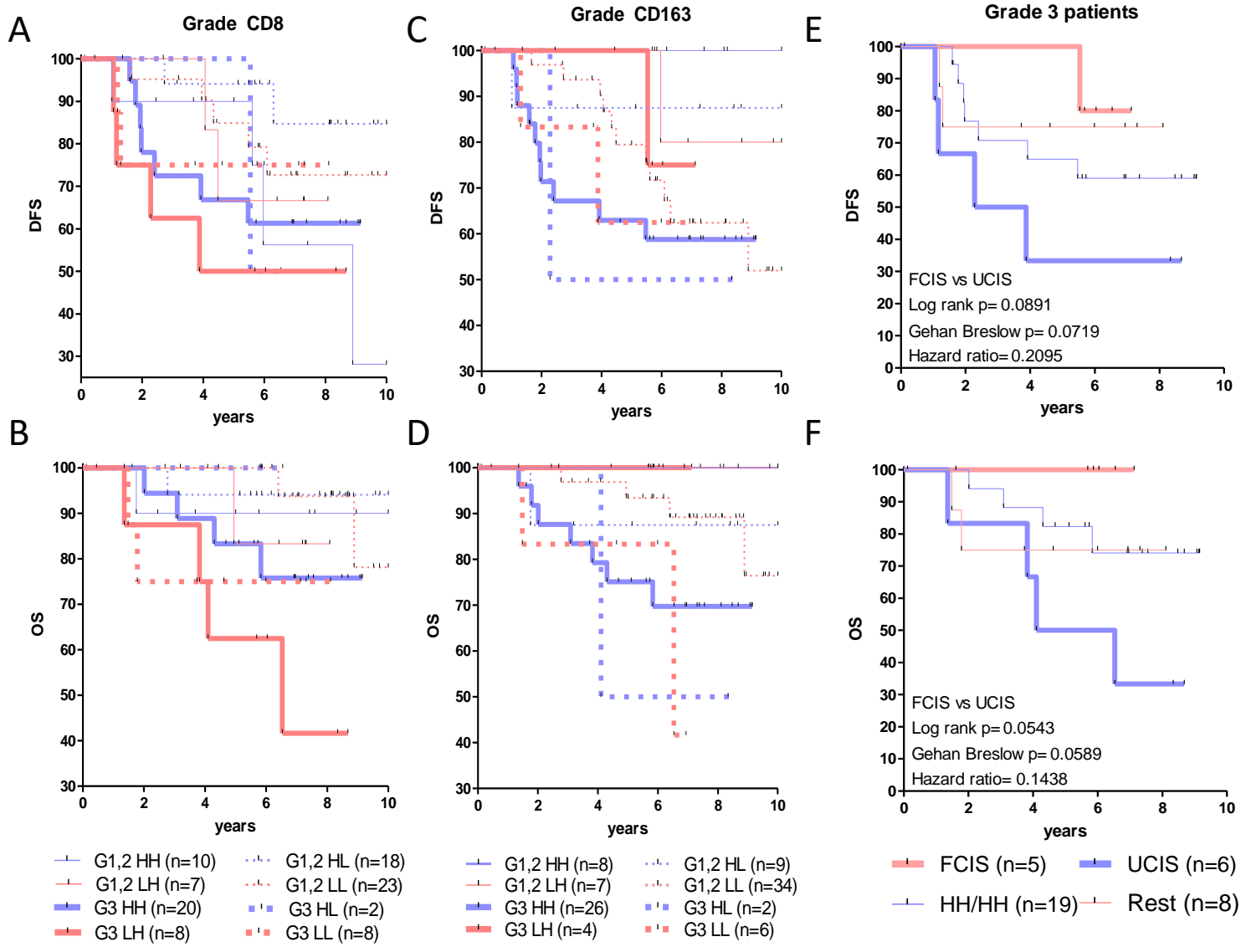
— LN neg TC H (n=13) - - - LN neg TC L (n=25)
 — LN neg IM H (n=14) - - - LN neg IM L (n=24)
 — LN pos TC H (n=32) - - - LN pos TC L (n=27)
 — LN pos IM H (n=31) - - - LN pos IM L (n=28)

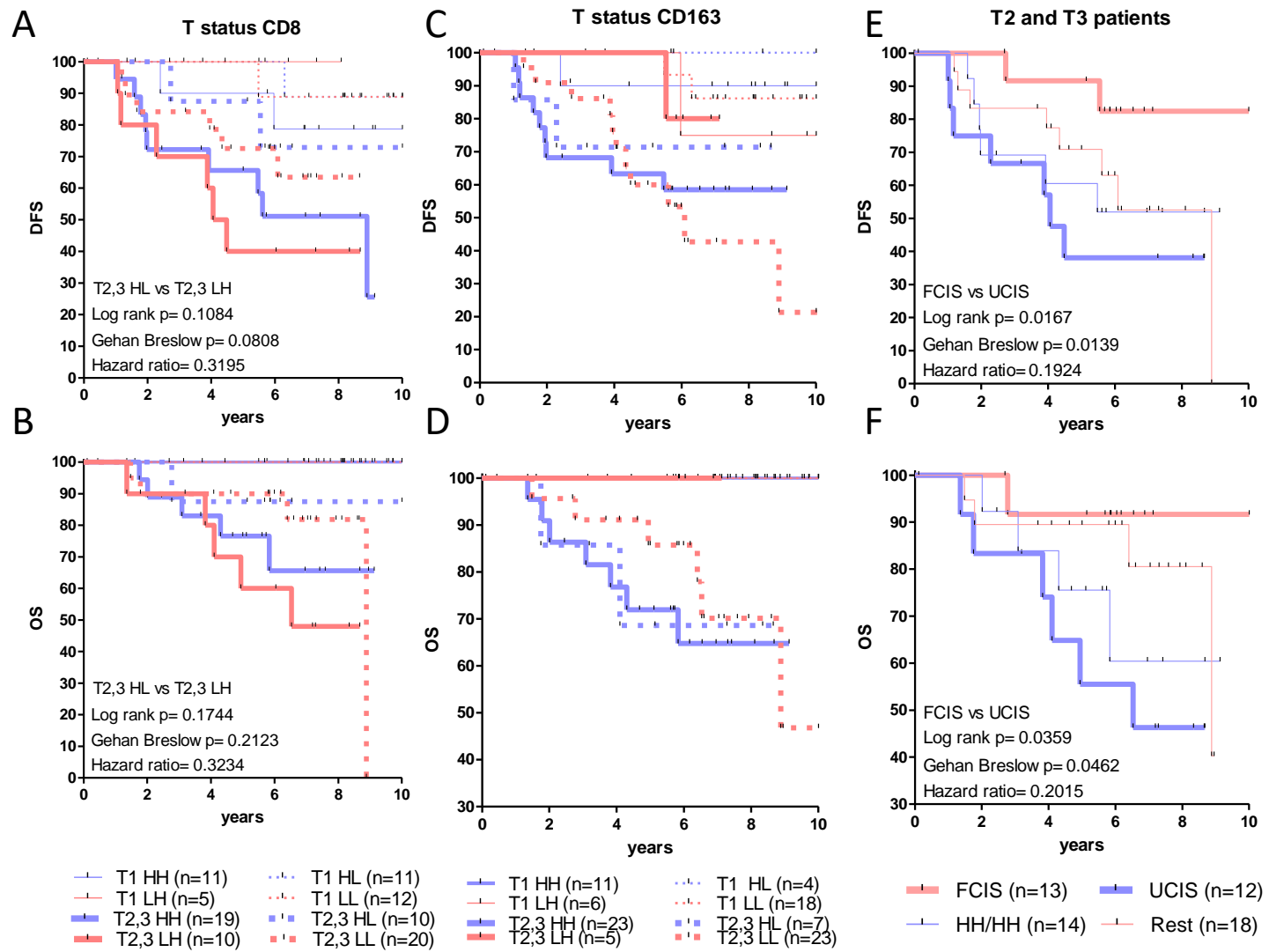


— early TC H (n=27)	···· early TC L (n=23)
— early IM H (n=19)	···· early IM L (n=31)
— adv TC H (n=23)	— adv TC L (n=24)
— adv IM H (n=26)	— adv IM L (n=21)

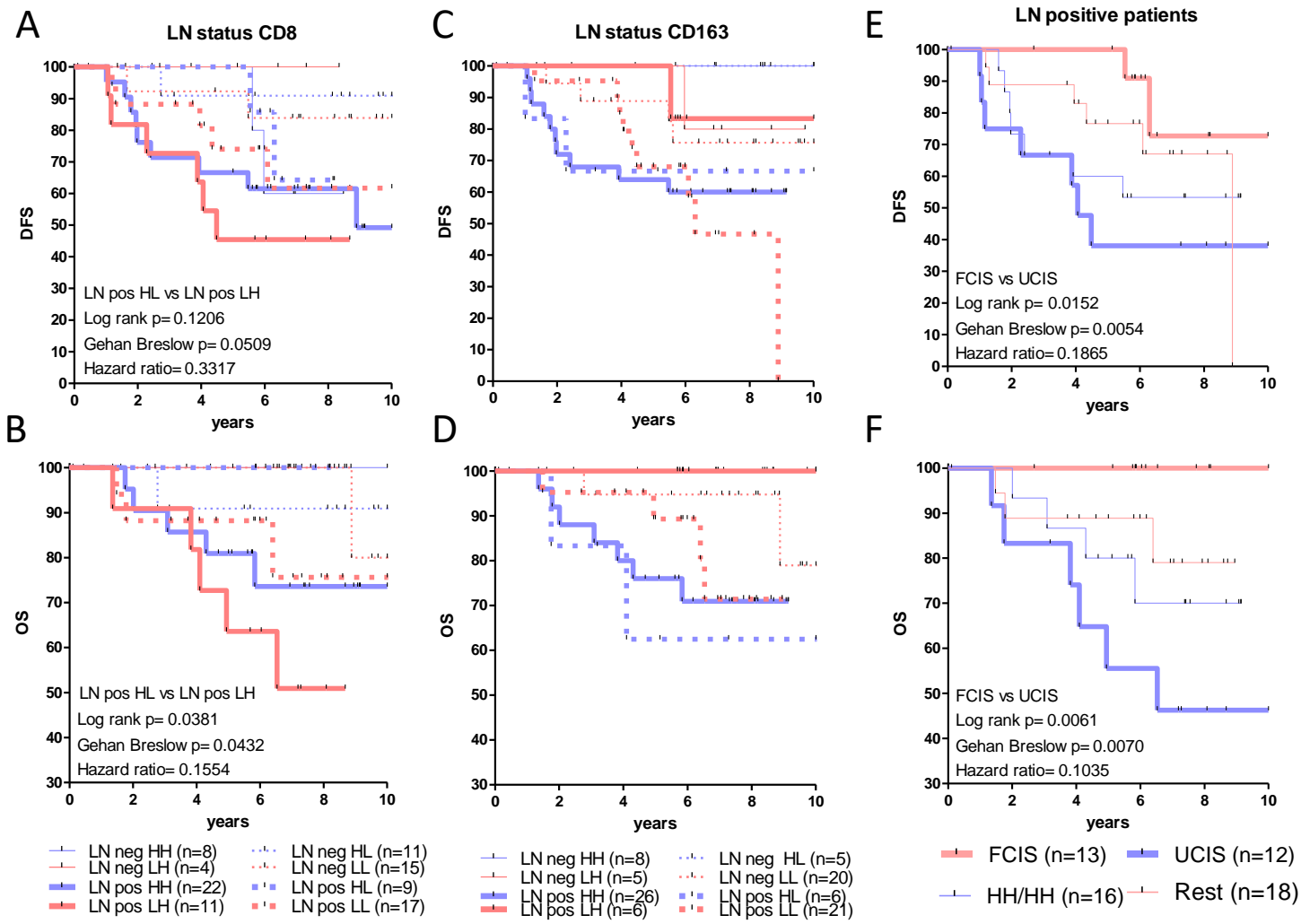


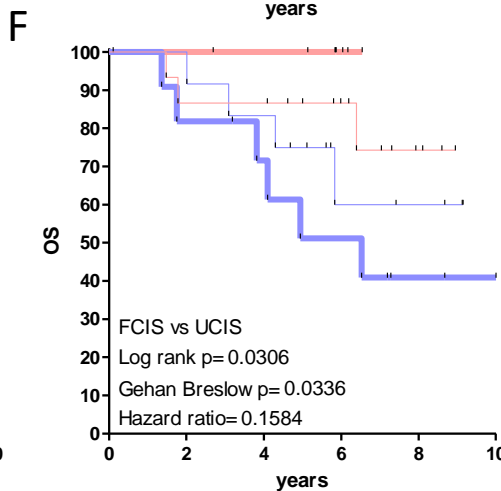
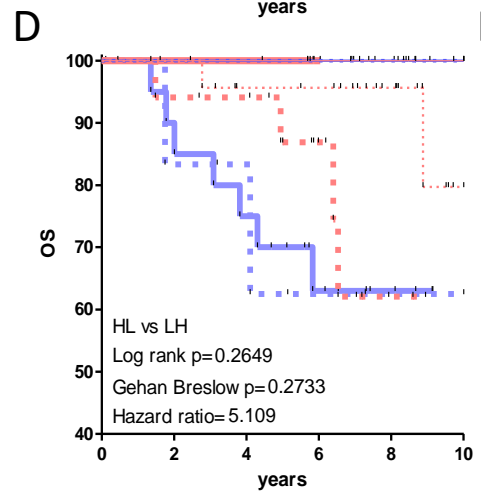
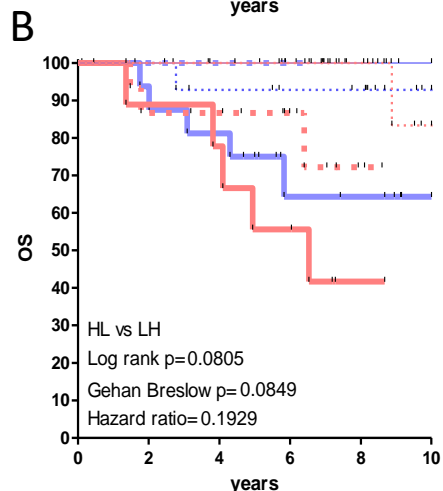
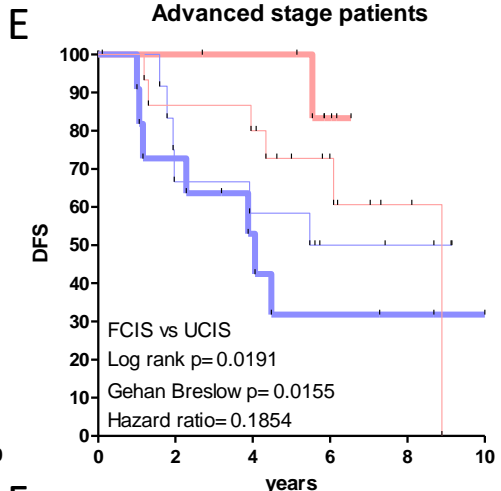
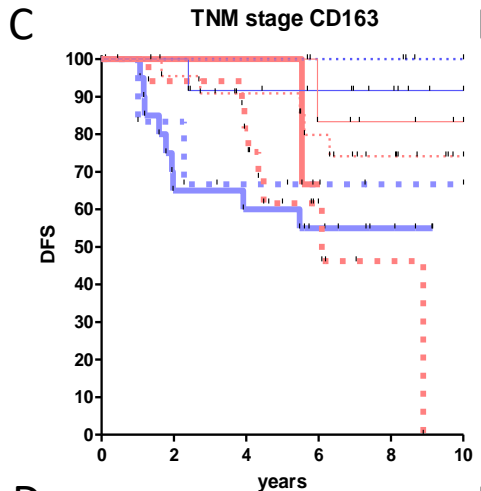
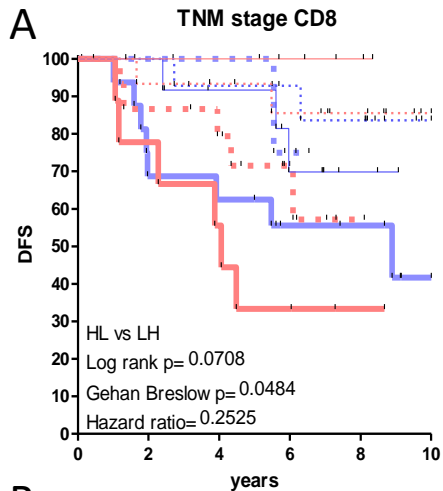
— early TC H (n=18)	···· early TC L (n=32)
— early IM H (n=21)	···· early IM L (n=29)
— adv TC H (n=27)	— adv TC L (n=20)
— adv IM H (n=24)	— adv IM L (n=23)





Sup. Fig. 8





— Adv HH (n=17) - - - Adv HL (n=6)
— Adv LH (n=9) - - - Adv LL (n=15)
- - - Early HH (n=13) - - - Early HL (n=14)
- - - Early LH (n=6) - - - Early LL (n=17)

— Adv HH (n=21) - - - Adv HL (n=6)
— Adv LH (n=3) - - - Adv LL (n=17)
- - - Early HH (n=13) - - - Early HL (n=5)
- - - Early LH (n=8) - - - Early LL (n=24)

— FCIS (n=8) — UCIS (n=11)
- - - HH/HH (n=13) - - - Rest (n=15)