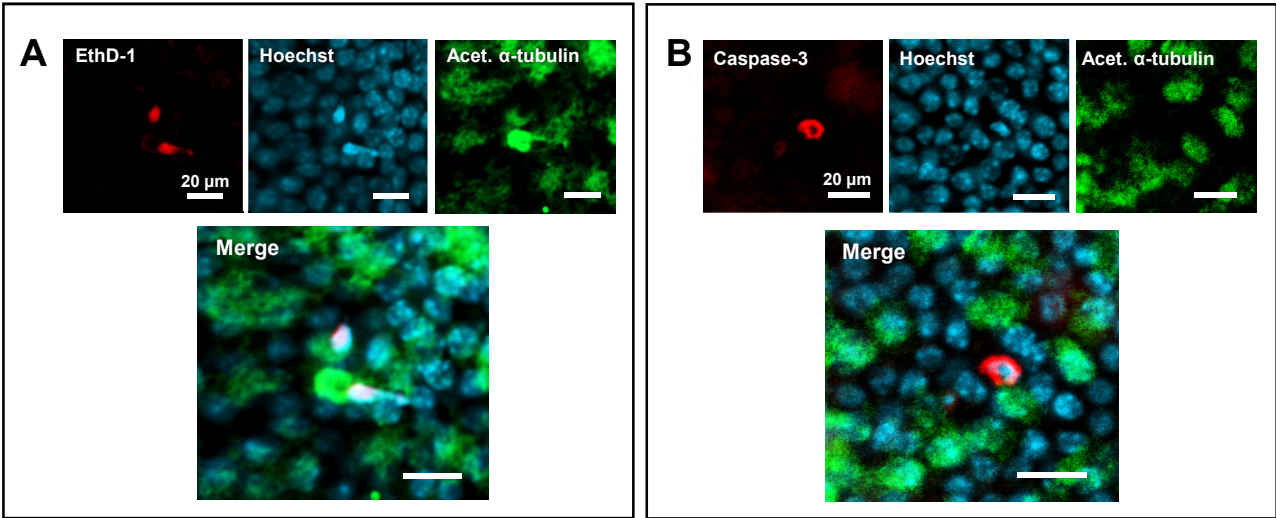


Additional file 4



Staining of necrotic and apoptotic cells in the epithelial layer

Images show necrotic cells stained with ethidium homodimer-1 (EthD1, red, **A**) and a apoptotic cell stained with anti-cleaved caspase-3 antibody (red, **B**). The cell nuclei were stained with Hoechst dye (blue) and ciliated cells were stained with a anti-acetylated α -tubulin antibody (green).