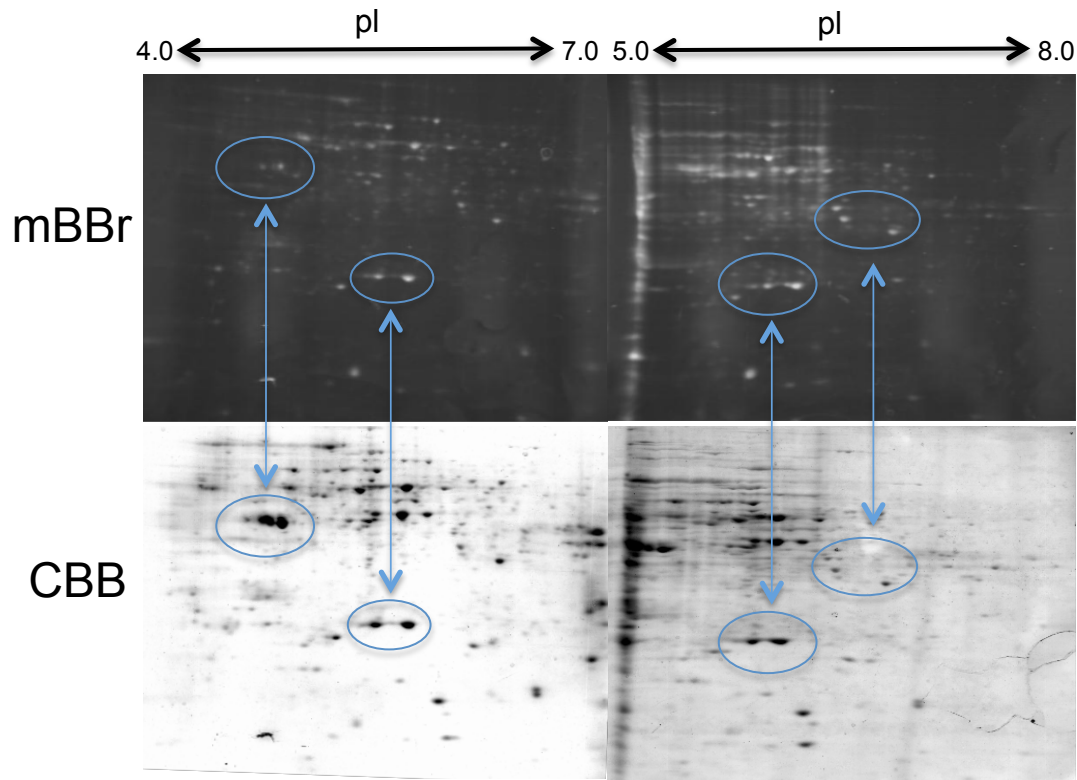


Supplementary Figure 1



Supplementary Figure S1 2-DE gel images of proteins

The gel images of mBBr-tagged proteins which extracted from rice cv. Nipponbare cultured cells (Upper image) and of CBB staining proteins(Lower image). In this method, proteins carrying a reduced cysteine residue can be detected by intensity of mBBr fluorescence. After detection of mBBr fluorescence, the gel was stained with Coomassie Brilliant Blue(CBB) which represents total protein quantity. Blue circles and arrows indicate identical spots between mBBr fluorescence and CBB staining. Isoelectric points were shown on top of photos.