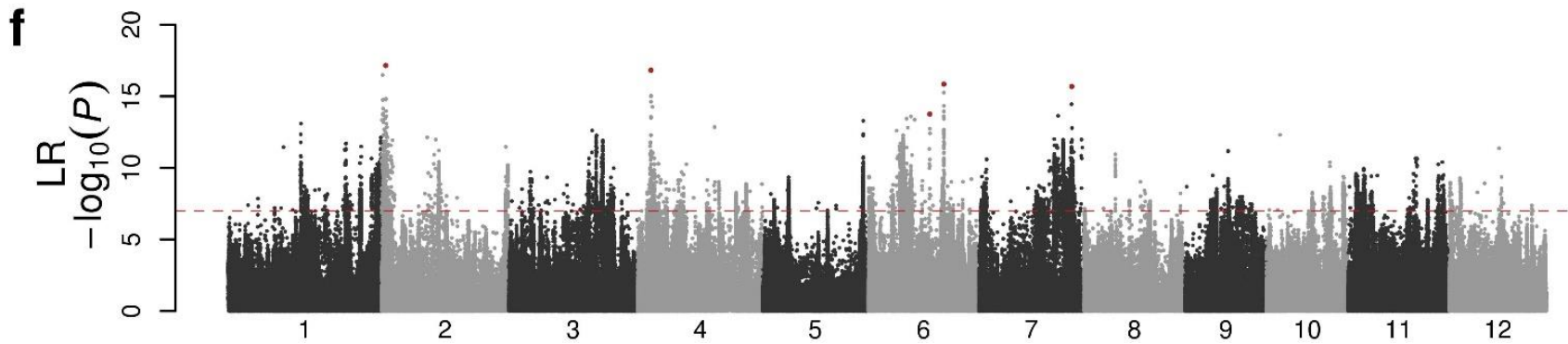
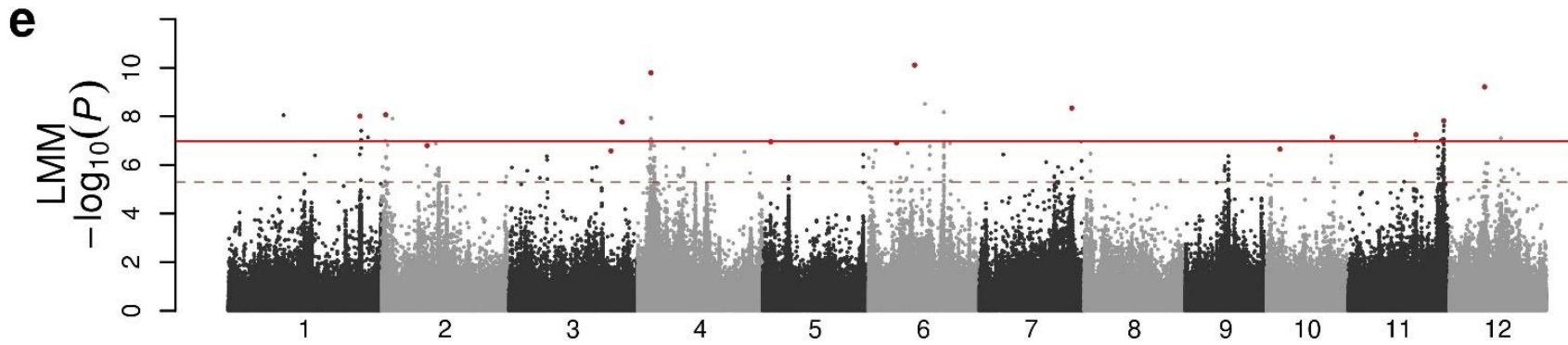
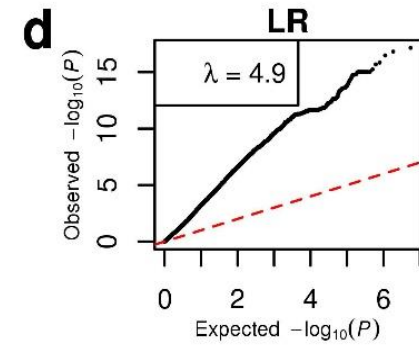
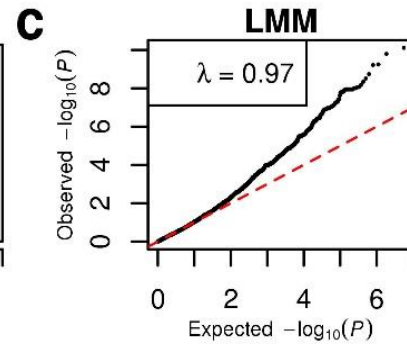
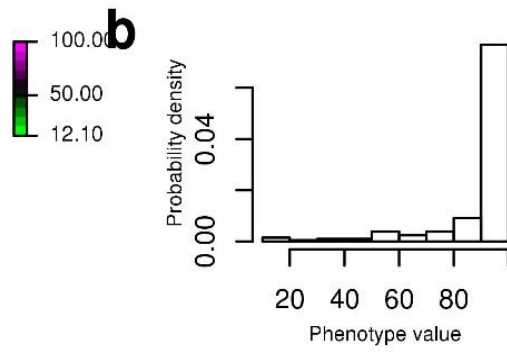
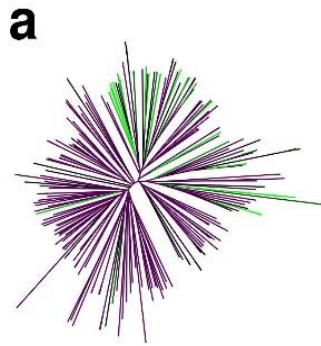
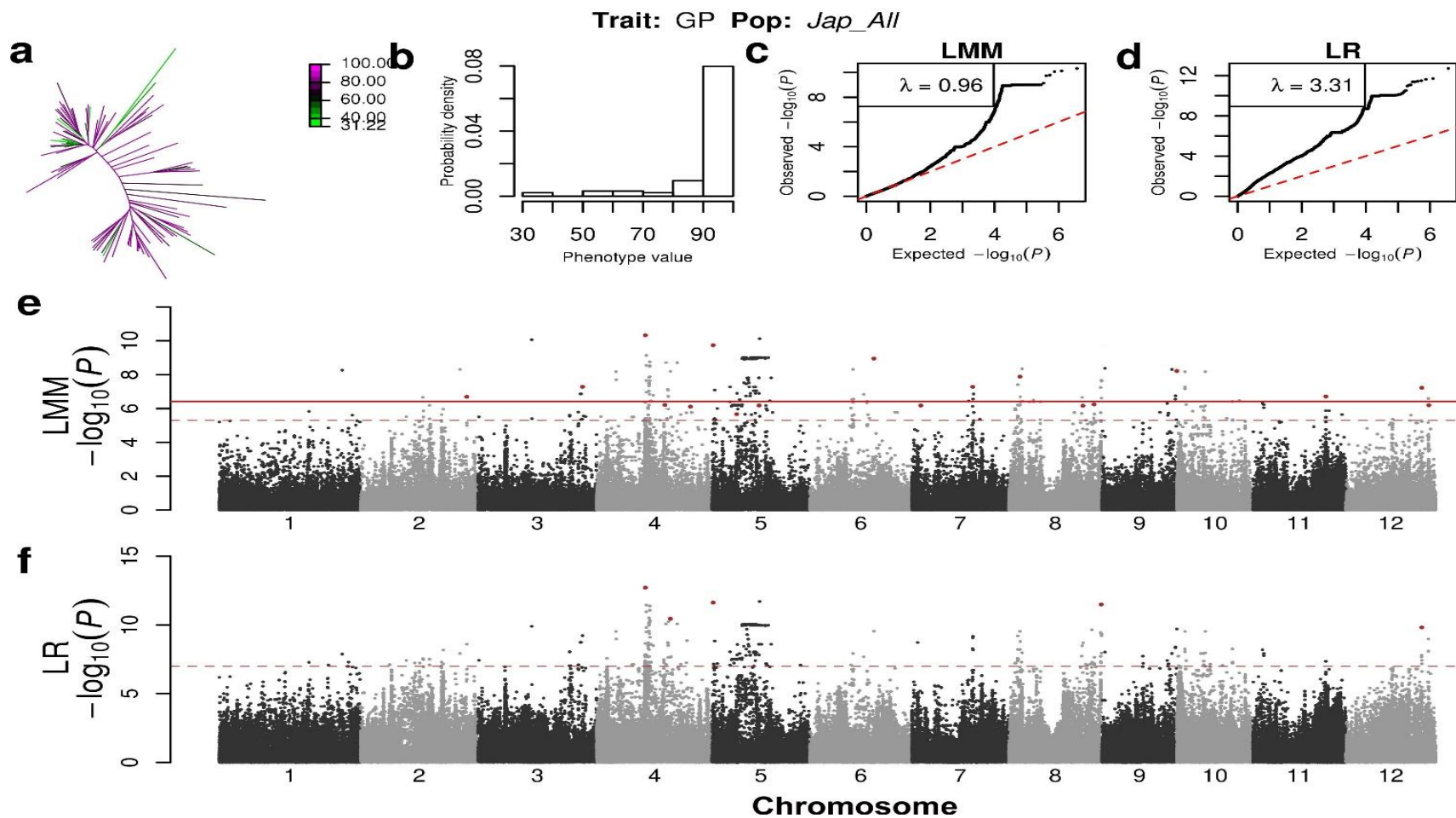


Trait: GP Pop: *Ind_All*





Additional file 7: The GWAS analysis results and quantile-quantile (Q-Q) plots of p-values for germination percentage (GP) of after-ripened seeds (ARS) in whole, Aus, indica and japonica populations in our study.

- a) Neighbor- joining tree of rice varieties in a corresponding population. (b) A histogram of the phenotype in the population (c-d) Quantile- Quantile plot of the expected null distribution and the observed P-value using the Linear mixed model (c) and linear regression model (d). (e-f) Genome-wide P-values for the mixed model (e) and the simple linear regression model.