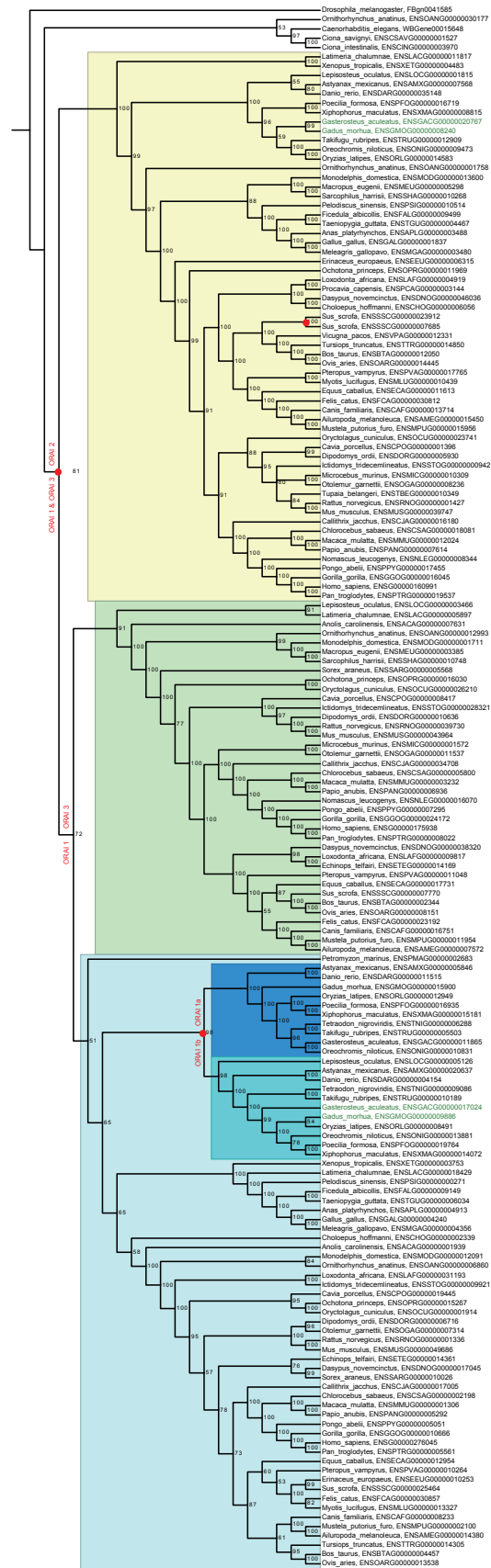


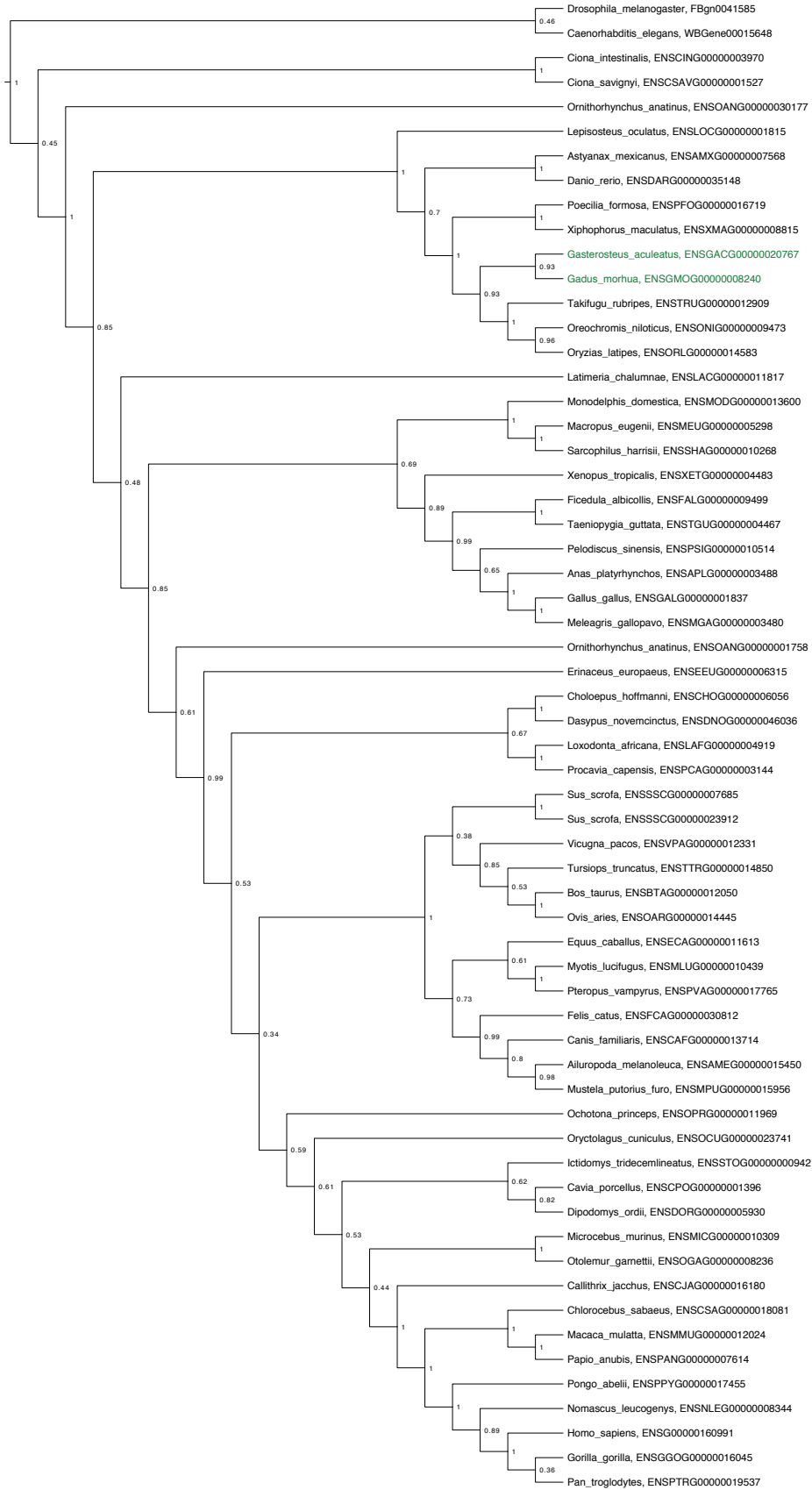
Gene family tree and orthologous gene trees of ORAI

The node labels are the bootstrap values in A and posterior probabilities in B, C, D, E. Gene duplication nodes are annotated with red dots. The leaves highlighted in clover are two species that show similar incongruence between the gene trees and species tree as STIMATE-like gene.

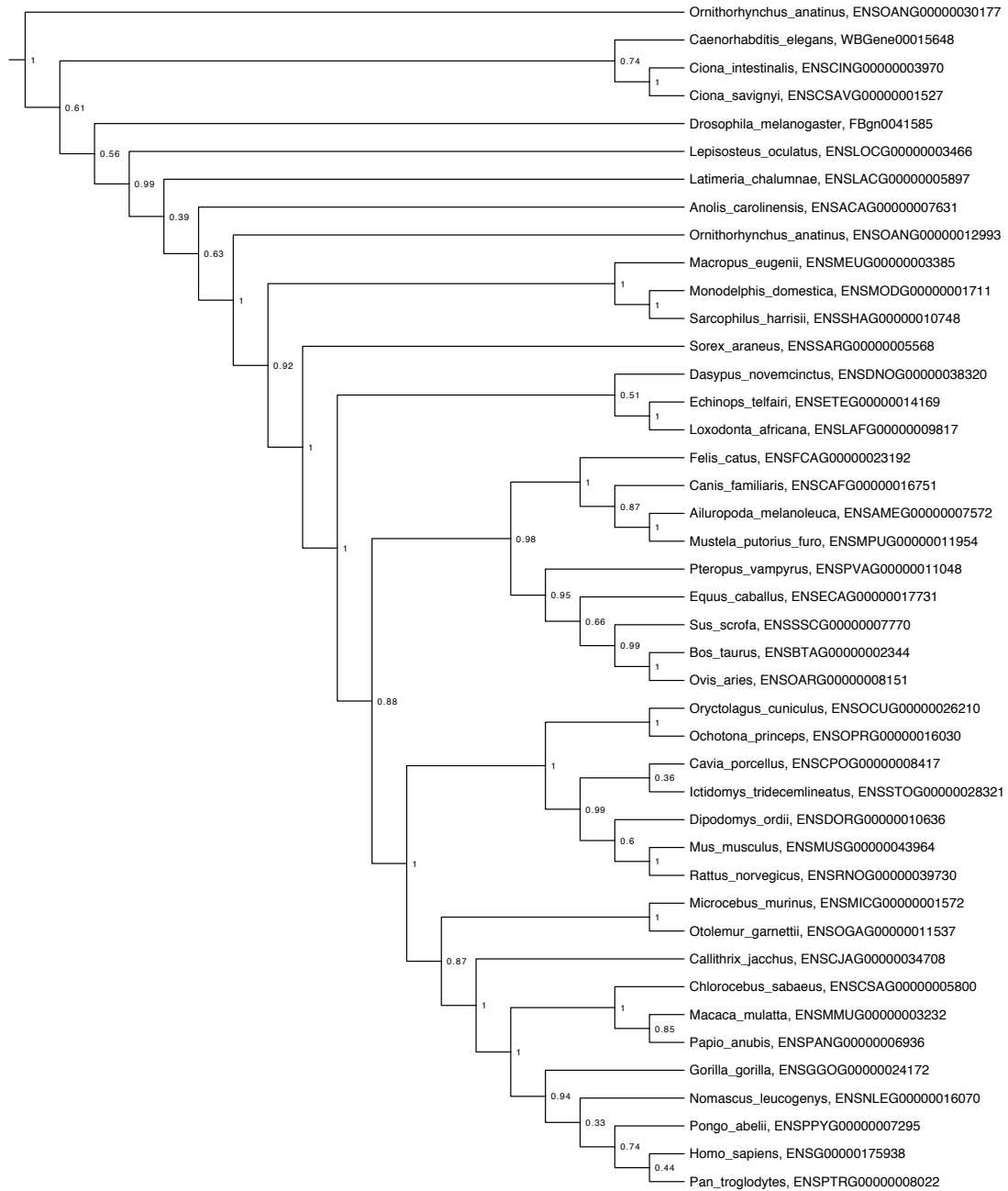
A) The gene family tree of ORAI (resulted from ALE following BEAST)



B) Tree of orthologue set 1/ ORAI 2 (resulted from *BEAST)



C) Tree of orthologue set 2/ ORAI 3 (resulted from *BEAST)



D) Tree of orthologue set 3/ ORAI 1a (resulted from *BEAST)

