

Figure S1 Comparison of BUDS and NeatMap for matrix ordering applied to three biological datasets. The heatmaps are shown for 500 randomly selected features (the same for BUDS and Neatmap). A default color scheme setting was for NeatMap heatmaps. BUDS ordering gives a much clearer visualization of the continuous patterns present in the data.

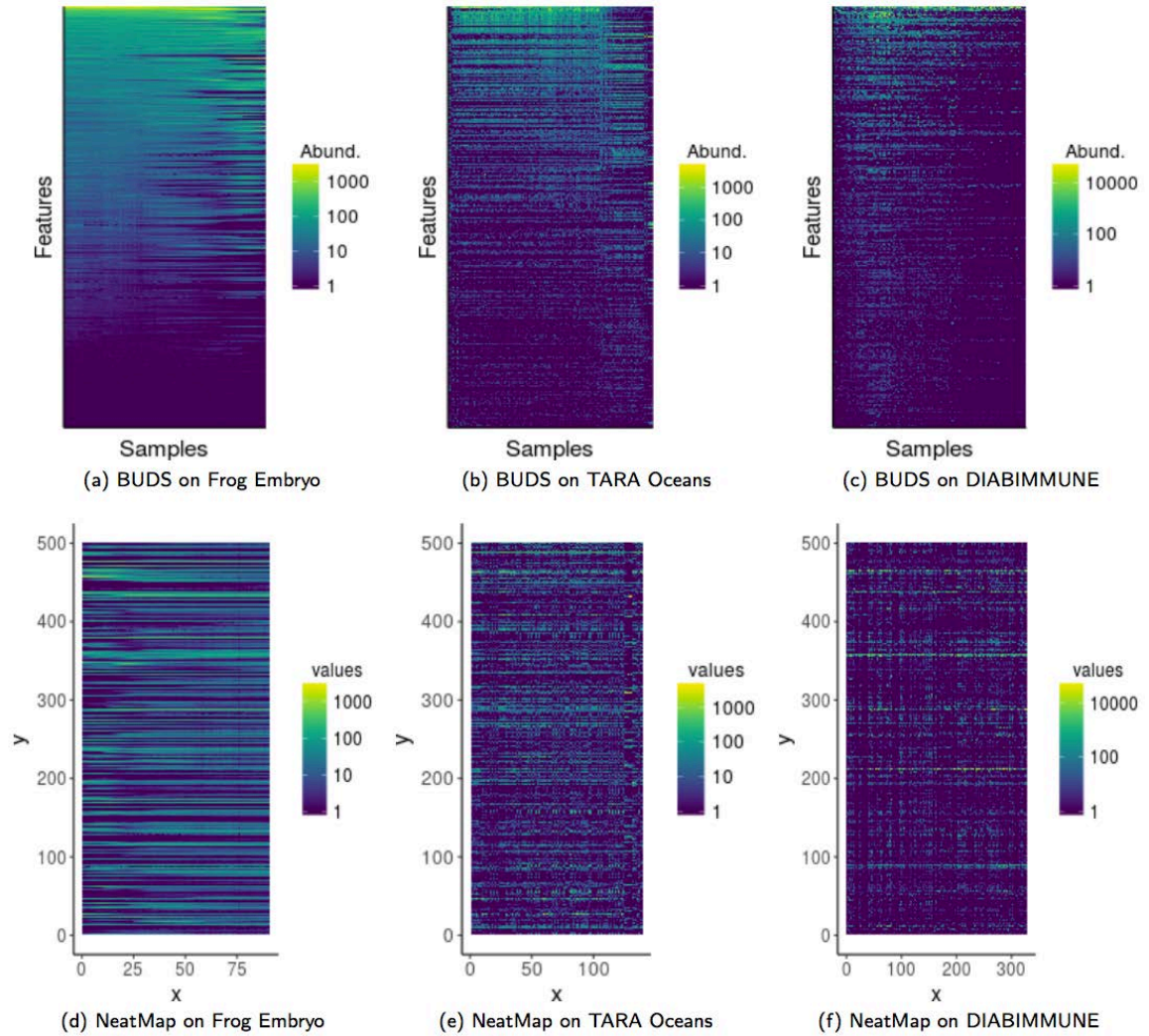


Figure S2 Comparison of BUDS and NeatMap for matrix ordering applied to three biological datasets. The heatmaps are shown for 500 randomly selected features (the same for BUDS and Neatmap). A viridis color scheme setting was for NeatMap heatmaps. BUDS ordering gives a much clearer visualization of the continuous patterns present in the data.