

H3K36me3:
Scale H3K36me3 by 0.5518
Significant differential enrichment from consensus,
q-value (pFDR): 3.9425e-28

H3K4me1:
Scale H3K4me1 by 0.93236
Significant differential enrichment from consensus,
q-value (pFDR): 3.4848e-28

H3K4me2:
Scale H3K4me2 by 0.84207
Significant differential enrichment from consensus,
q-value (pFDR): 0.027369

H3K4me3:
Scale H3K4me3 by 2.1756
Significant differential enrichment from consensus,
q-value (pFDR): 0.027369

(a)

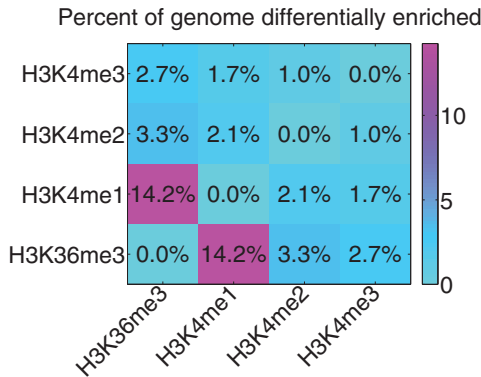
H3K27ac A1:
Scale H3K27ac A1 by 0.90514
Significant differential enrichment from consensus,
q-value (pFDR): 0.00071174

H3K27ac A2:
Scale H3K27ac A2 by 0.79977
Significant differential enrichment from consensus,
q-value (pFDR): 0.00059786

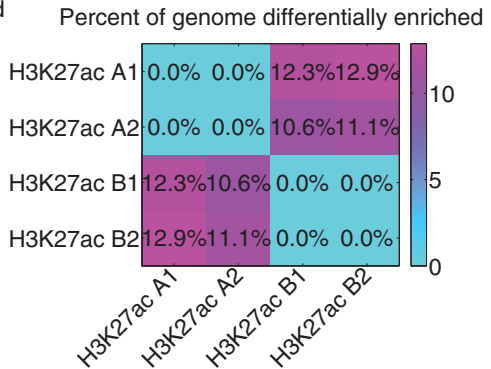
H3K27ac B1:
Scale H3K27ac B1 by 1.1693
Significant differential enrichment from consensus,
q-value (pFDR): 0.00071174

H3K27ac B2:
Scale H3K27ac B2 by 1.153
Significant differential enrichment from consensus,
q-value (pFDR): 0.00071174

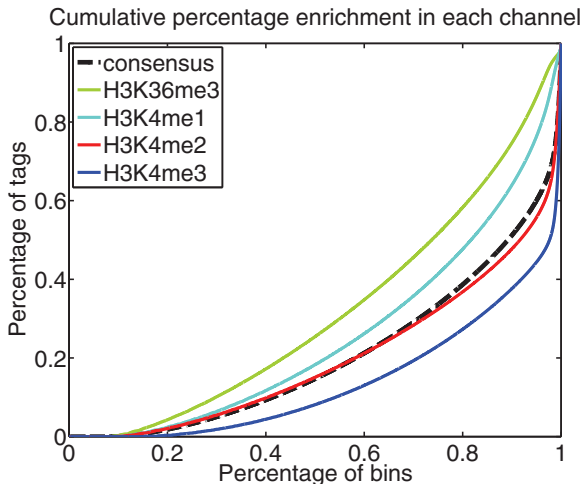
(b)



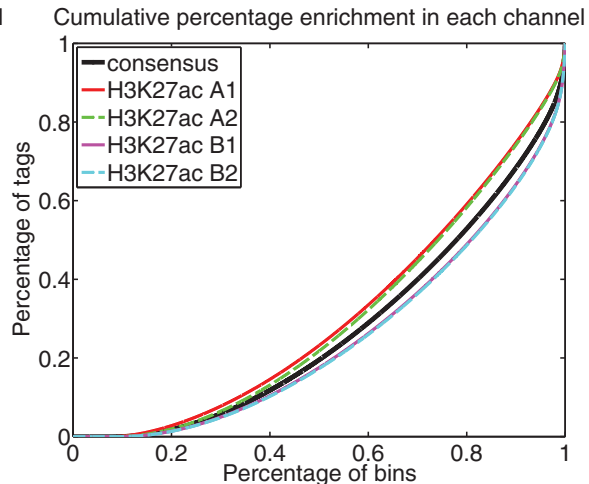
(c)



(d)



(e)



(f)