

### CT View

Coronal view is shown, with standard black and white coloration. Patient info blurred for privacy.

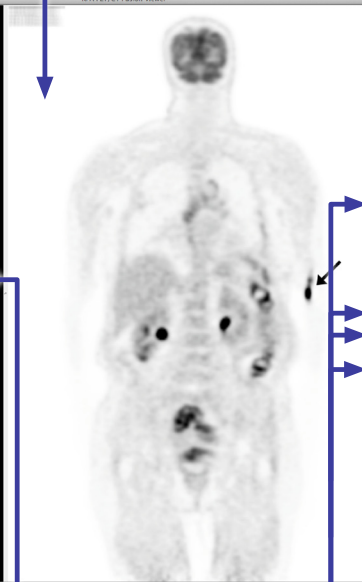


### Annotations

The viewer supports annotations so as to allow physicians to indicate areas of interest on the scan data.

### PET/Fusion View

PET view is shown, with inverse black and white coloration. Dark spots indicate glucose uptake.

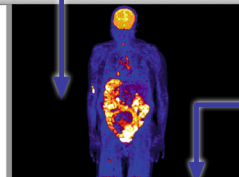


### Human-Readable Labels

Color tables, controls and views are clearly labeled with plain-English descriptions. User interface elements are presented in typical use-order, from top to bottom, as derived from analysis of a typical diagnostic workflow.

### Maximum Intensity Projection (MIP)

3D rotatable view of PET information. View shown with colour Lookup Table (LUT) applied.



### Rotation Control

MIP View can be rotated freely, or allowed to animate a continuous rotation.

### Colorization Presets

### View Axis Navigation

### PET Fusion/Colorization

Viewer can overlay and colorize both PET and CT Views at once.

### View Switching

Viewer can project data along multiple axes.

### Metadata and Reporting

INVOLVE2 preserves available DICOM Metadata, such as patient demographic information.

