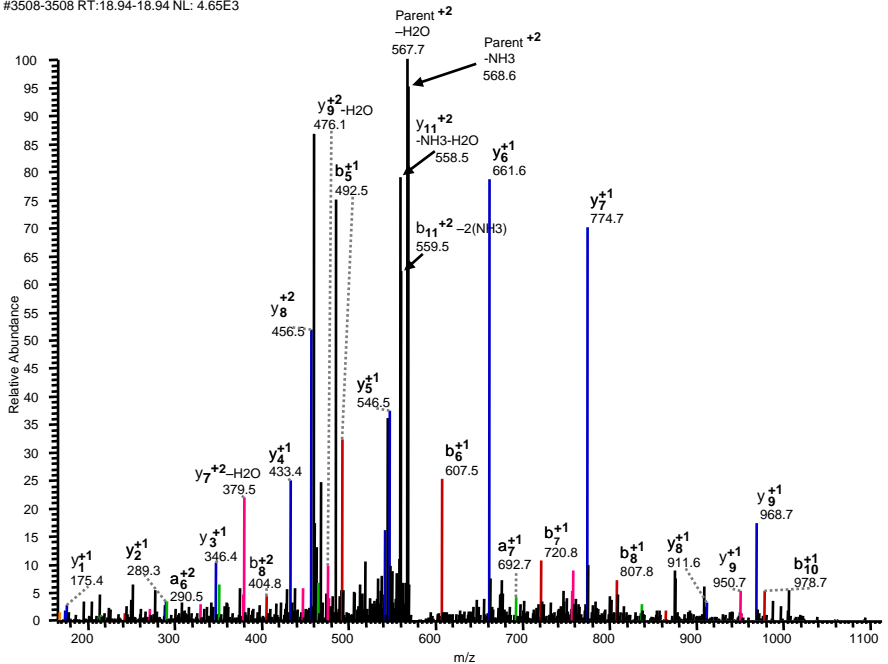


A.

#3508-3508 RT:18.94-18.94 NL: 4.65E3



B.

b	b ⁺²		y	y ⁺²
---	---	1	A 11	---
185.3	---	2	L 10	1082.2 541.6
242.3	---	3	G 9	969.1 485.1
379.4	190.2	4	H 8	911.9 456.5
492.6	246.8	5	L 7	774.8 387.9
607.7	304.3	6	D 6	661.6 331.3
720.9	360.9	7	L 5	546.6 273.8
807.9	404.5	8	S 4	433.4 217.2
864.9	432.9	9	G 3	346.3 173.7
979.1	490.0	10	N 2	289.3 145.2
---	559.5	11	R 1	175.2 88.1

C.

