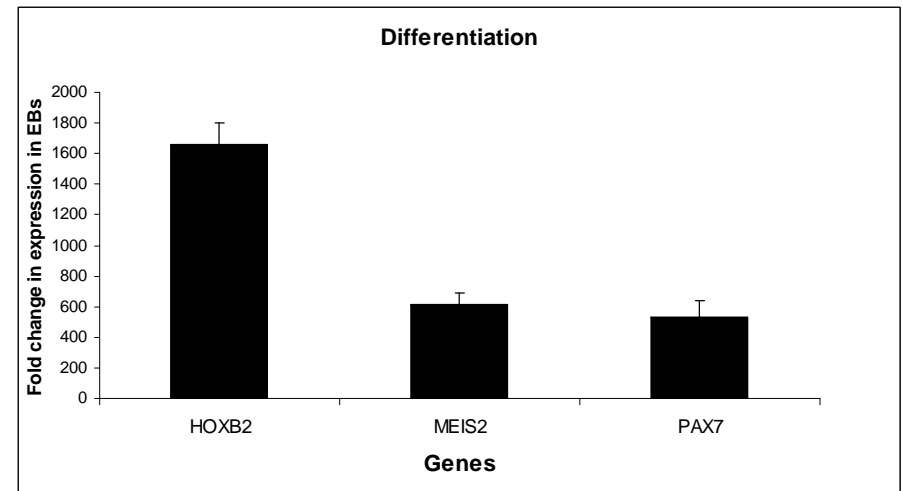
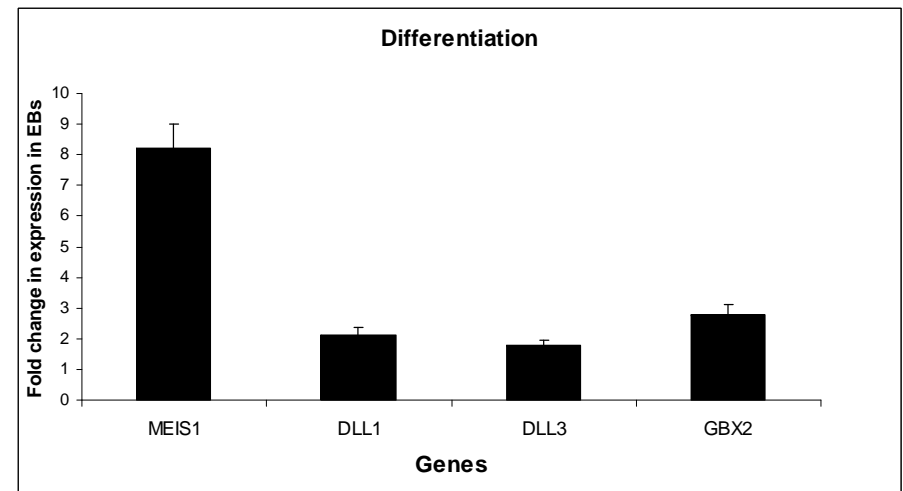
**B****C**

Figure S2. Human Embryoid Bodies (EBs) exhibit loss of Myc binding on *Hox* genes, and a significant up-regulation of differentiation-associated genes. A. ChIP analysis of N-Myc and Miz-1 binding in human ES cells and EBs. B and C. Real-time qRT-PCR of a series of differentiation associated genes. Error bars are standard deviations. N=3.