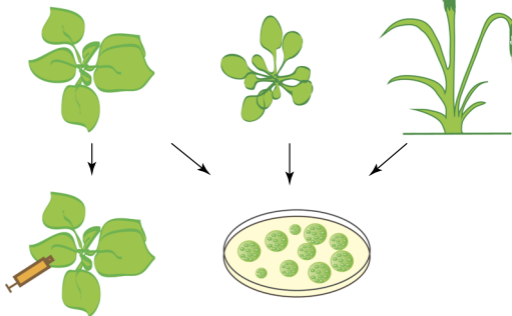


Nicotiana

Arabidopsis

Rice, Wheat



Infiltrate *A. tumefaciens* carrying Cas9 and sgRNA into *N. benthamiana* leaf

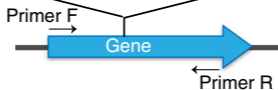
Extract and transform protoplast with plasmids carrying Cas9 and sgRNA



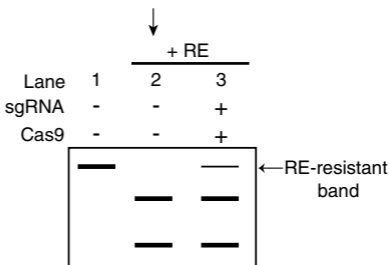
Extract genomic DNA



...NNN**NNNNNNNNNNNNNNNNNNNNNNNNNNNN**NGGNNNN...
Target



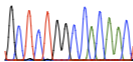
PCR amplify across the target site



Digest PCR product with a restriction enzyme (RE)



Clone the restriction enzyme-resistant band from lane 3



Sequence