

Standard conditions of model development

Original study and first „close“ replication for assessing the replicability of findings

“Standard” laboratory housing (usually small same-sex groups, no objects in cage, incidentally nesting material)

One gender (usually males; sometimes females, or pooled data of males and females are used)

One age (usually young adults)

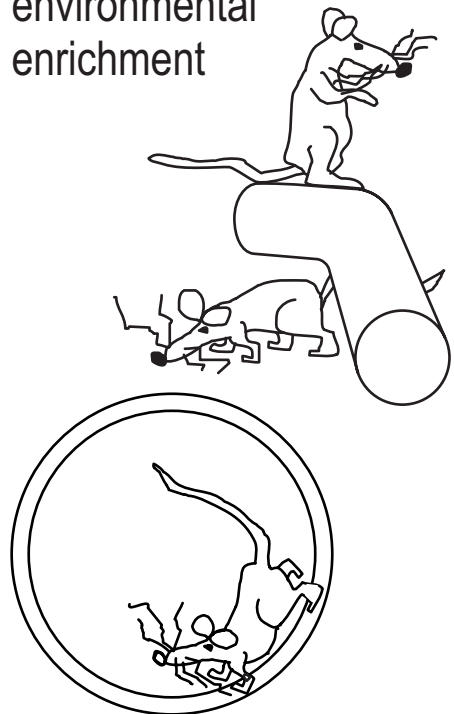
A small number of tests

One species, usually rat, or (genetically modified) mouse

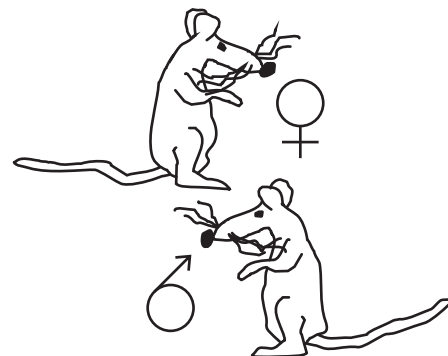
Extended model development: increasing generalizability (external validity)

Systematic or differential replication

Different housing conditions, such as environmental enrichment



Both sexes



Different ages
a) ontogeny, e.g.:
from birth to adulthood



b) aging, e.g.:

3 months
(young adult)



12 months
(middle-aged)

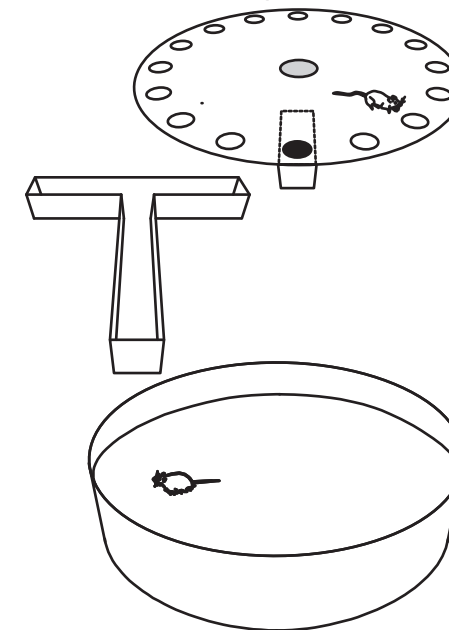


24 months
(old)



Conceptual replication

Additional tests
(incl. tests that are believed to measure the same trait)



Quasireplication

Different species,
including non-rodents

e.g. rat



e.g. (mini)pig

