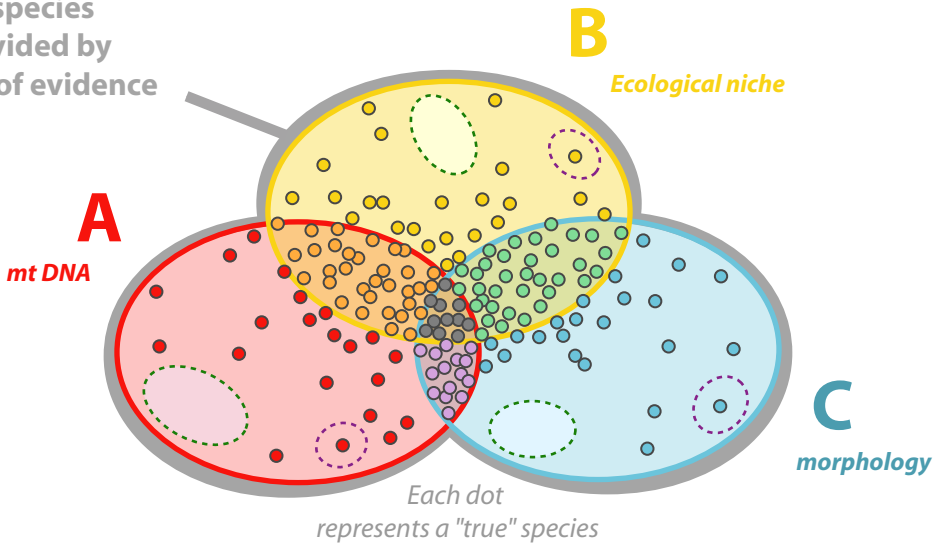


Full space for species discovery provided by three sources of evidence



Integration by cumulation

$A \cup B \cup C$

Two possible ways of integration

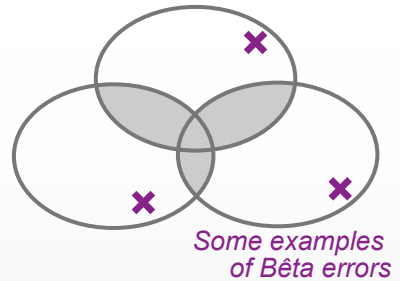
Integration by congruence

$A \cap B \cap C$
3 lines of evidence
 $A \cap B$ or $B \cap C$ or $A \cap C$
2 lines of evidence



Alpha = over-estimation

Lower confidence in species names



Bêta = under-estimation

Higher confidence in species names