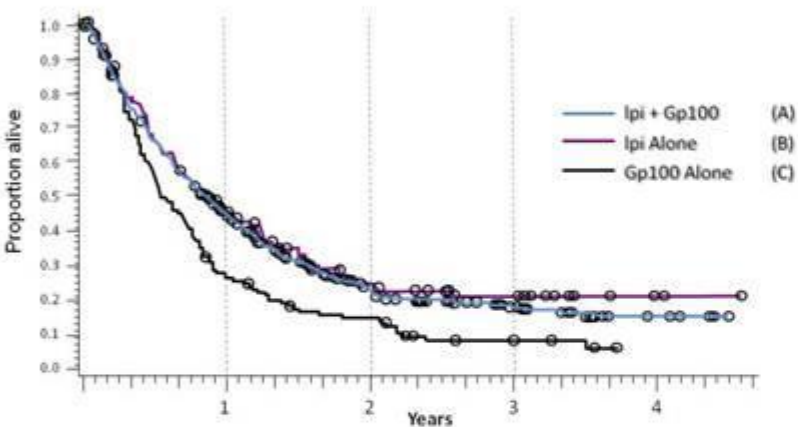


MDX010-020 study

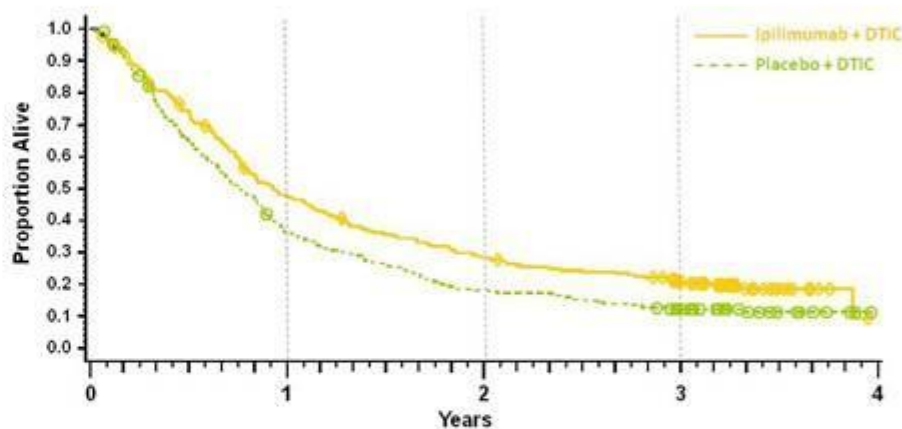
modified from Hodi et al. *N Engl J Med.* 2010³



Survival Rate	lpi + gp100 N=403	lpi + pbo N=137	gp100 + pbo N=136
1 year	44%	46%	25%
2 year	22%	24%	14%

Ca184-024 study

modified from Robert et al. *N Engl J Med.* 2011⁴



Survival Rate	1 Year	2 Year	3 Year
Ipilimumab + DTIC n=250	47.3	28.5	20.8
Placebo + DTIC n=252	36.3	17.9	12.2