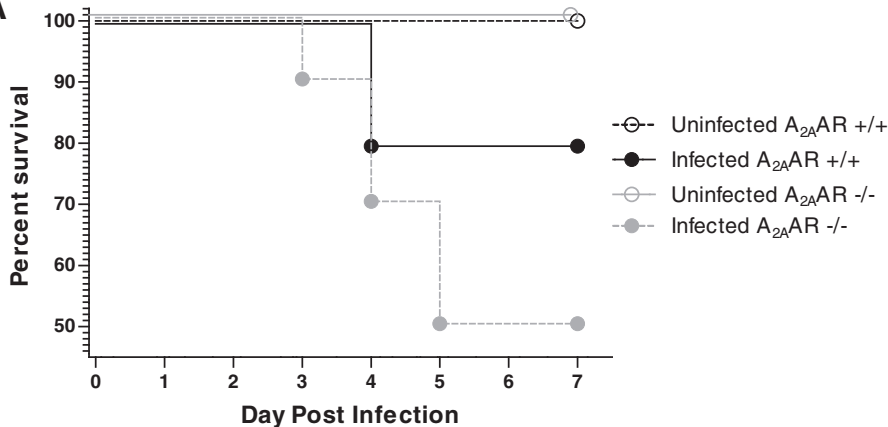


A**B**

Cumulative Mortality Rate from All Experiments

$A_{2A}AR$ gene	+/+	-/-	+/+	-/-
<i>C. difficile</i>	-	-	+	+
<i>Exp A</i>	5 (5)	4 (4)	10 (7)	10 (3)
<i>Exp B</i>	4 (4)	4 (4)	5 (4)	10 (5)
<i>Exp C</i>	3 (3)	3 (3)	5 (5)	5 (3)
<i>Exp D</i>	1 (1)	1 (1)	4 (2)	5 (0)
Total	13 (13)	12 (12)	24 (18)	30 (11)
Mortality	0.00%	0.00%	25.00%	63.33%